



# CHIRALA ENGINEERING COLLEGE

RAMAPURAM BEACH ROAD, CHIRALA, ANDHRA PRADESH - 523157.

Approved by AICTE, Affiliated to JNTUK, Kakinada.

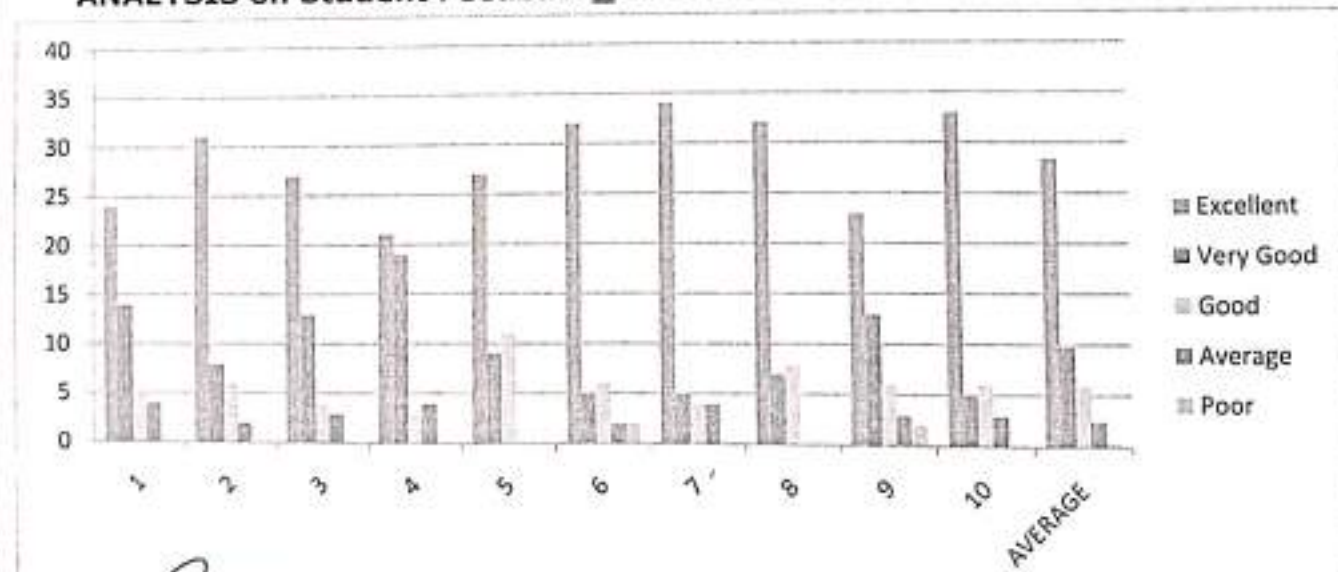
(ISO 9001:2008 Certified Institution)

## SUMMARY OF STUDENT'S FEEDBACK FORM ON CURRICULUM (A.Y-2022-2023)

Program Year 2022 - 2023	Year-Semester II-I	Branch ECE	Total No. Of Samples 47
-----------------------------	-----------------------	---------------	----------------------------

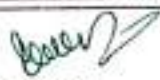
S.NO.	ATTRIBUTES/PARAMETERS	Excellent	Very Good	Good	Average	Poor
1	Rate the syllabus you studied in relation to the competencies required from the courses.	24	14	5	4	
2	The credit allotment for the course is appropriate.	31	8	6	2	
3	The depth of the course content is appropriate in relation to the intended course outcomes (COs).	27	13	4	3	
4	The syllabus's modules are properly ordered.	21	19	3	4	
5	The curriculum helped me increase my abilities to develop, analyze, and solve problems.	27	9	11		
6	Rate the evaluation scheme created for each course.	32	5	6	2	2
7	The course materials are readily available.	34	5	4	4	
8	Calculate the proportion (%) of courses that have lab components.	32	7	8		
9	The laboratory trials improved conceptual knowledge and allowed for the connection of theory to practice (Experiential Learning).	23	13	6	3	2
10	The entire syllabus was completed in the class by the teacher	33	5	6	3	
	AVERAGE	28.4	9.8	5.9	2.5	0.4

### ANALYSIS on Student Feedback\_ II B.Tech-I Semester AY 2022-2023



  
 Head of the Department  
 Department of E.C  
 CHIRALA ENGINEERING COLLEGE  
 CHIRALA-523157



  
 Principal  
 PRINCIPAL  
 CHIRALA ENGINEERING COLLEGE,  
 CHIRALA



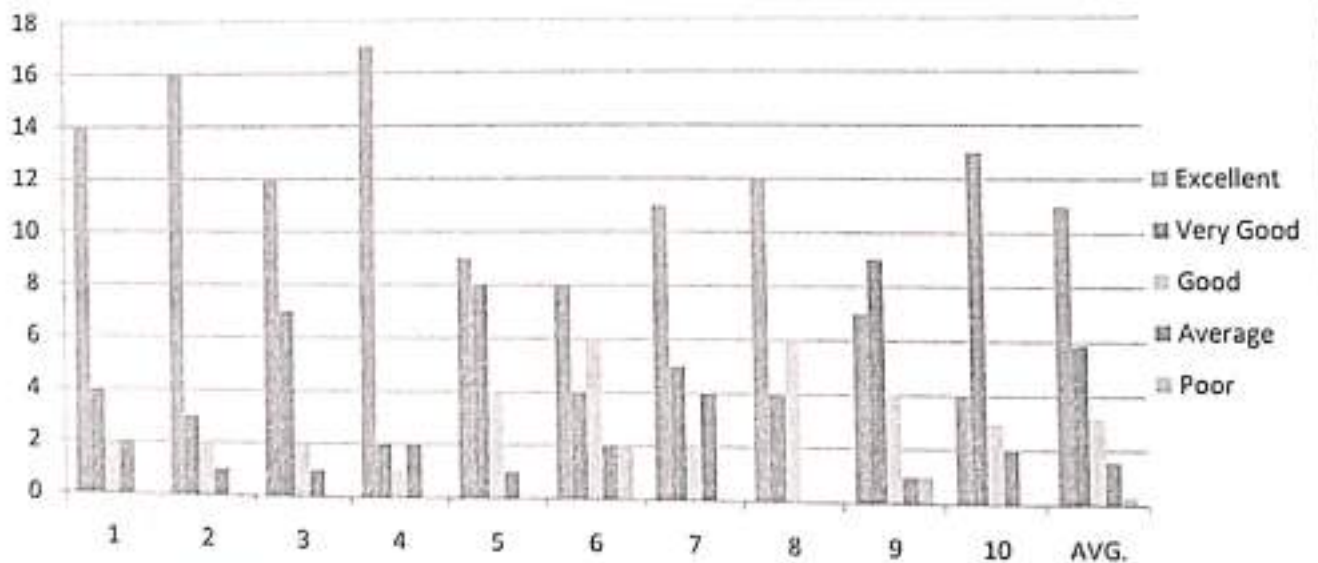
where professionalism speaks

**CHIRALA ENGINEERING COLLEGE**  
 RAMAPURAM BEACH ROAD, CHIRALA, ANDHRA PRADESH - 523157.  
 Approved by AICTE, Affiliated to JNTUK, Kakinada.  
 (ISO 9001:2008 Certified Institution)

**SUMMARY OF STUDENT'S FEEDBACK FORM ON CURRICULUM (A.Y-2022-2023)**

Program Year	Year-Semester	Branch	Total No. Of Samples			
2022 - 2023	III-I	ECE	22			
S.NO.	ATTRIBUTES/PARAMETERS	Excellent	Very Good	Good	Average	Poor
1	Rate the syllabus you studied in relation to the competencies required from the courses.	14	4	2	2	
2	The credit allotment for the course is appropriate.	16	3	2	1	
3	The depth of the course content is appropriate in relation to the intended course outcomes (COs).	12	7	2	1	
4	The syllabus's modules are properly ordered.	17	2	1	2	
5	The curriculum helped me increase my abilities to develop, analyze, and solve problems.	9	8	4	1	
6	Rate the evaluation scheme created for each course.	8	4	6	2	2
7	The course materials are readily available.	11	5	2	4	
8	Calculate the proportion (%) of courses that have lab components.	12	4	6		
9	The laboratory trials improved conceptual knowledge and allowed for the connection of theory to practice (Experiential Learning).	7	9	4	1	1
10	The entire syllabus was completed in the class by the teacher	4	13	3	2	
	AVERAGE	11	5.9	3.2	1.6	0.3

**ANALYSIS on Student Feedback\_ III B.Tech-I Semester AY 2022-2023**



Head of the Department  
 Department of E.C.E  
 CHIRALA ENGINEERING COLLEGE  
 CHIRALA-523157



Principal  
 PRINCIPAL  
 CHIRALA ENGINEERING COLLEGE  
 CHIRALA





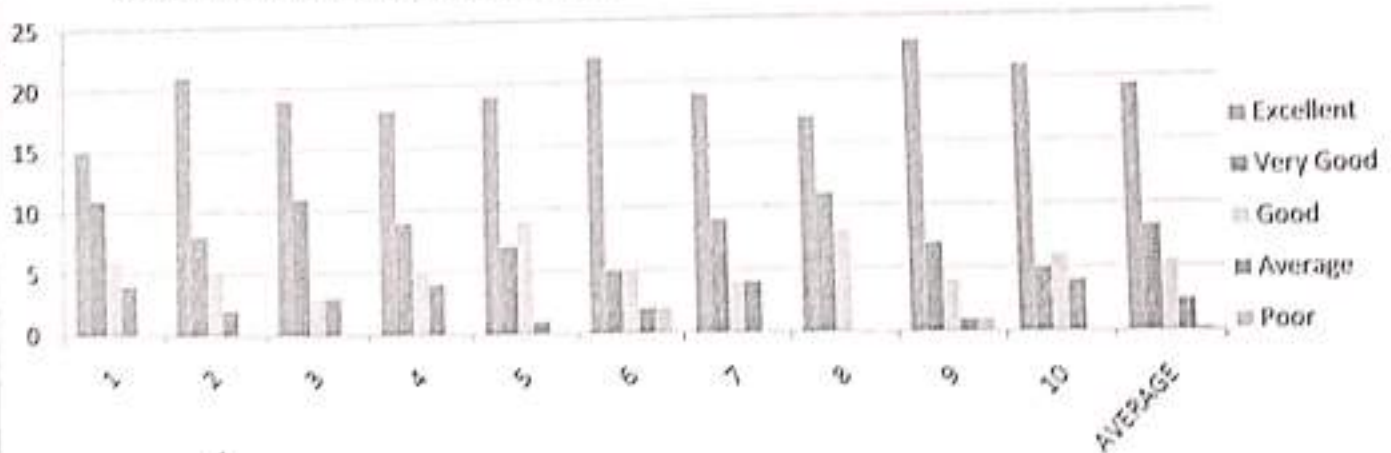
# CHIRALA ENGINEERING COLLEGE

RAMAPURAM BEACH ROAD, CHIRALA, ANDHRA PRADESH - 523157.  
Approved by AICTE, Affiliated to JNTUK, Kakinada.  
(ISO 9001:2008 Certified Institution)

## SUMMARY OF STUDENT'S FEEDBACK FORM ON CURRICULUM (A.Y-2022-2023)

Program Year 2022 - 2023	Year-Semester IV-I	Branch ECE	Total No. Of Samples 36			
S.NO.	ATTRIBUTES/PARAMETERS	Excellent	Very Good	Good	Average	Poor
1	Rate the syllabus you studied in relation to the competencies required from the courses.	15	11	6	4	
2	The credit allotment for the course is appropriate.	21	8	5	2	
3	The depth of the course content is appropriate in relation to the intended course outcomes (COs).	19	11	3	3	
4	The syllabus's modules are properly ordered.	18	9	5	4	
5	The curriculum helped me increase my abilities to develop, analyze, and solve problems.	19	7	9	1	
6	Rate the evaluation scheme created for each course.	22	5	5	2	2
7	The course materials are readily available.	19	9	4	4	
8	Calculate the proportion (%) of courses that have lab components.	17	11	8		
9	The laboratory trials improved conceptual knowledge and allowed for the connection of theory to practice (Experiential Learning).	23	7	4	1	1
10	The entire syllabus was completed in the class by the teacher	21	5	6	4	
<b>AVERAGE</b>		<b>19.4</b>	<b>8.3</b>	<b>5.5</b>	<b>2.5</b>	<b>0.3</b>

**ANALYSIS of Student Feedback\_IV B.Tech-I Semester AY 2022-2023**



Head of the Department  
 Department of E.C.E.  
**CHIRALA ENGINEERING COLLEGE**  
 CHIRALA-523157



Principal  
**CHIRALA ENGINEERING COLLEGE**  
 CHIRALA



# CHIRALA ENGINEERING COLLEGE

RAMAPURAM BEACH ROAD, CHIRALA, ANDHRA PRADESH - 523157.

Approved by AICTE, Affiliated to JNTUK, Kakinada.

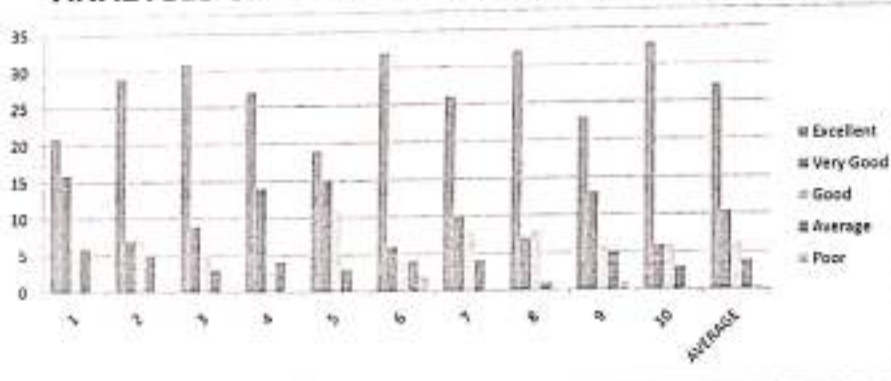
(ISO 9001:2008 Certified Institution)

## SUMMARY OF STUDENT'S FEEDBACK FORM ON CURRICULUM

Program Year	Year-Semester	Branch	Total No. Of Samples
2022 - 2023	II-II	ECE	48

S.NO.	ATTRIBUTES/PARAMETERS	Excellent	Very Good	Good	Average	Poor
1	Rate the syllabus you studied in relation to the competencies required from the courses.	21	16	5	6	
2	The credit allotment for the course is appropriate.	29	7	7	5	
3	The depth of the course content is appropriate in relation to the intended course outcomes (COs).	31	9	5	3	
4	The syllabus's modules are properly ordered.	27	14	3	4	
5	The curriculum helped me increase my abilities to develop, analyze, and solve problems.	19	15	11	3	
6	Rate the evaluation scheme created for each course.	32	6	4	4	2
7	The course materials are readily available.	26	10	8	4	
8	Calculate the proportion (%) of courses that have lab components.	32	7	8	1	
9	The laboratory trials improved conceptual knowledge and allowed for the connection of theory to practice (Experiential Learning).	23	13	6	5	1
10	The entire syllabus was completed in the class by the teacher	33	6	6	3	
AVERAGE		27.3	10.3	6.3	3.8	0.3

### ANALYSIS on Student Feedback\_ II B.Tech-II Semester AY 2022-2023



  
 Head of the Department  
 Department of E.C.E  
 CHIRALA ENGINEERING COLLEGE  
 CHIRALA-523157



  
 Principal  
 PRINCIPAL  
 CHIRALA ENGINEERING COLLEGE  
 CHIRALA





where professionalism speaks

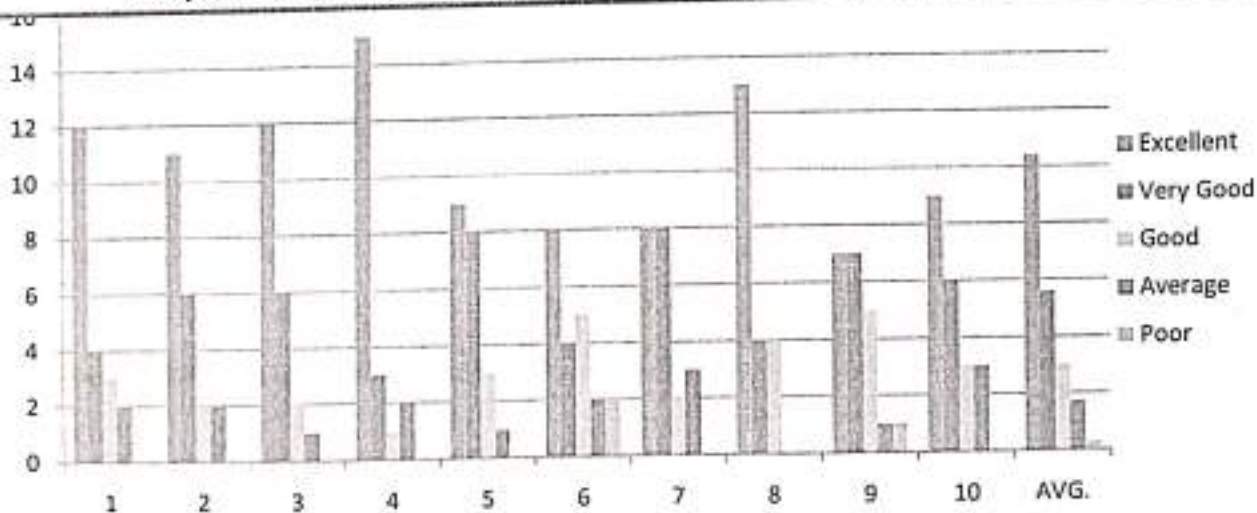
**CHIRALA ENGINEERING COLLEGE**  
 RAMAPURAM BEACH ROAD, CHIRALA, ANDHRA PRADESH - 523157.  
 Approved by AICTE, Affiliated to JNTUK, Kakinada.  
 (ISO 9001:2008 Certified Institution)

**SUMMARY OF STUDENT'S FEEDBACK FORM ON CURRICULUM**

Program Year	Year-Semester	Branch	Total No. Of Samples
2022 - 2023	III-II	ECE	21

S.NO.	ATTRIBUTES/PARAMETERS	Excellent	Very Good	Good	Average	Poor
1	Rate the syllabus you studied in relation to the competencies required from the courses.	12	4	3	2	
2	The credit allotment for the course is appropriate.	11	6	2	2	
3	The depth of the course content is appropriate in relation to the intended course outcomes (COs).	12	6	2	1	
4	The syllabus's modules are properly ordered.	15	3	1	2	
5	The curriculum helped me increase my abilities to develop, analyze, and solve problems.	9	8	3	1	
6	Rate the evaluation scheme created for each course.	8	4	5	2	2
7	The course materials are readily available.	8	8	2	3	
8	Calculate the proportion (%) of courses that have lab components.	13	4	4		
9	The laboratory trials improved conceptual knowledge and allowed for the connection of theory to practice (Experiential Learning).	7	7	5	1	1
10	The entire syllabus was completed in the class by the teacher	9	6	3	3	
	AVERAGE	10.4	5.6	3	1.7	0.3

Analysis on student feedback\_III B.Tech-II Semester For A.Y\_2022-2023



*[Signature]*  
 Head of the Department  
 Department of E.C.E  
 CHIRALA ENGINEERING COLLEGE  
 CHIRALA-523157



*[Signature]*  
 Principal  
 CHIRALA ENGINEERING COLLEGE  
 CHIRALA



where professionalism speaks

# CHIRALA ENGINEERING COLLEGE

RAMAPURAM BEACH ROAD, CHIRALA, ANDHRA PRADESH - 523157.

Approved by AICTE, Affiliated to JNTUK, Kakinada.

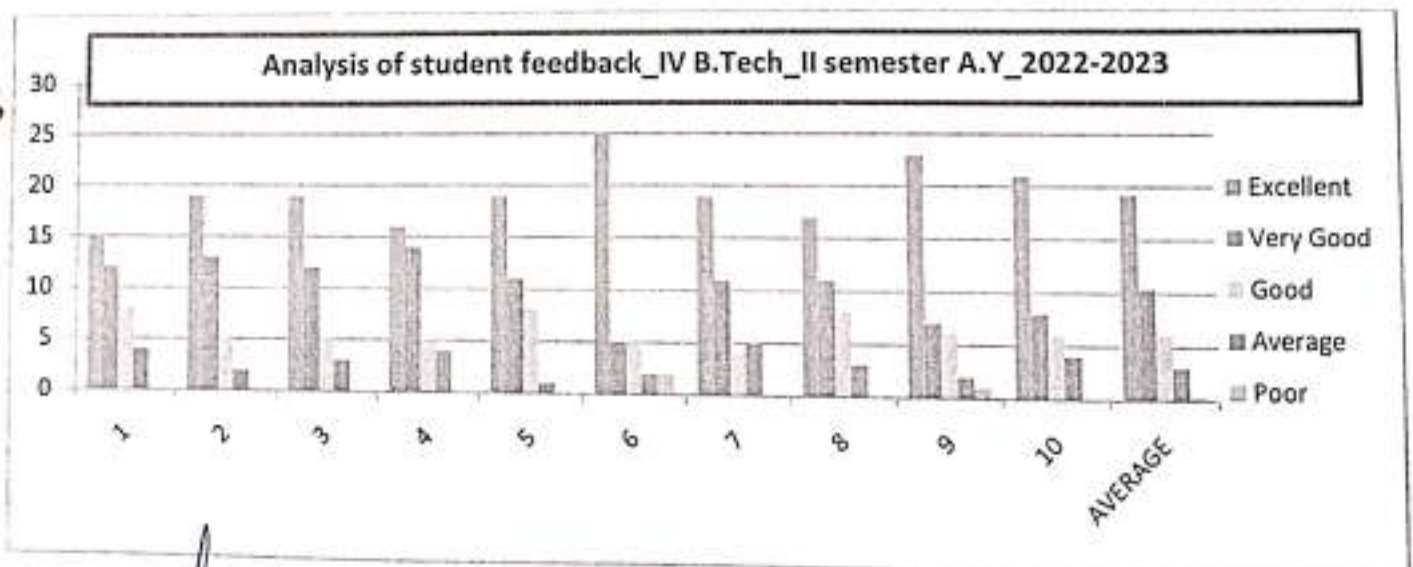
(ISO 9001:2008 Certified Institution)

## SUMMARY OF STUDENT'S FEEDBACK FORM ON CURRICULUM

Program Year	Year-Semester	Branch	Total No. Of Samples		
2022 - 2023	IV-II	ECE	39		

S.NO.	ATTRIBUTES/PARAMETERS	Excellent	Very Good	Good	Average	Poor
1	Rate the syllabus you studied in relation to the competencies required from the courses.	15	12	8	4	
2	The credit allotment for the course is appropriate.	19	13	5	2	
3	The depth of the course content is appropriate in relation to the intended course outcomes (COs).	19	12	5	3	
4	The syllabus's modules are properly ordered.	16	14	5	4	
5	The curriculum helped me increase my abilities to develop, analyze, and solve problems.	19	11	8	1	
6	Rate the evaluation scheme created for each course.	25	5	5	2	2
7	The course materials are readily available.	19	11	4	5	
8	Calculate the proportion (%) of courses that have lab components.	17	11	8	3	
9	The laboratory trials improved conceptual knowledge and allowed for the connection of theory to practice (Experiential Learning).	23	7	6	2	1
10	The entire syllabus was completed in the class by the teacher	21	8	6	4	
	AVERAGE	19.3	10.4	6	3	0.3



Head of the Department  
 Department of E.C.E  
 CHIRALA ENGINEERING COLLEGE  
 CHIRALA-523157



Principal  
 CHIRALA ENGINEERING COLLEGE  
 CHIRALA





where professionalism speaks

# CHIRALA ENGINEERING COLLEGE

RAMAPURAM BEACH ROAD, CHIRALA, Andhra Pradesh – 523157.

Approved by AICTE, Affiliated to JNTUK, Kakinada.

(ISO 9001:2008 Certified Institution)

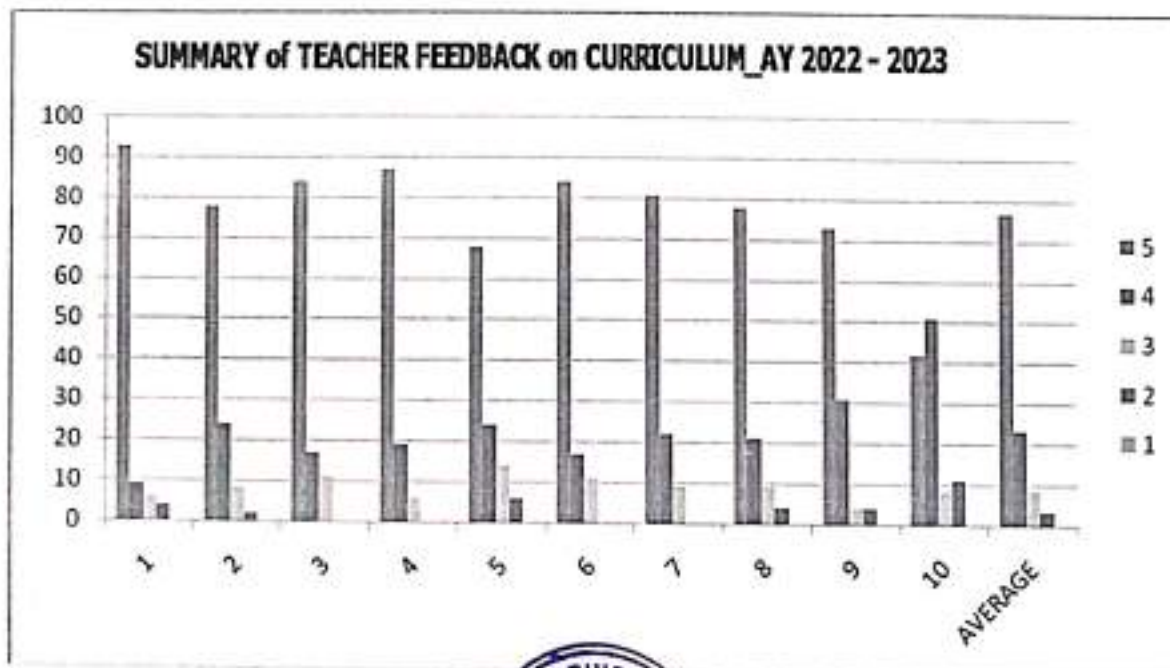
## SUMMARY of TEACHER FEEDBACK ON CURRICULUM (A.Y-2022-2023)

The questionnaire is intended to collect information relating to your satisfaction towards the curriculum, learning and evaluation. The information provided by you will be kept confidential and will be used as feedback for quality improvement of the program of studies/institution.

Directions: a score for each item please indicate your level of satisfaction with the following statement by choosing between 1 and 5.

\*Rating score: Excellent (5), Very Good(4), Good(3), Average (2), Below Average(1)

S No	Curriculum, Teaching, Learning and Evaluation	5	4	3	2	1
1.	Curriculum and Syllabus are need based	93	9	6	4	
2.	The course outcomes are well defined and clear.	78	24	8	2	
3.	Sufficient number of relevant reading materials and digital resources are available in the Library	84	17	11		
4.	The course has good balance between theory and application.	87	19	6		
5.	The syllabus of this course increased my knowledge and perspective in the subject area.	68	24	14	6	
6.	I am able to achieve the minimum required course outcome attainment level for my class	84	17	11		
7.	I have taken sufficient steps to provide assistance to slow learners	81	22	9		
8.	I have contributed to the curriculum and/or syllabus development.	78	21	9	4	
9.	I have the freedom to propose, modify, suggest and incorporate new topics in the syllabus through proper forum.	73	31	4	4	
10.	I have the freedom to adopt new techniques/education tools strategies in teaching.	42	51	8	11	
	AVERAGE	76.8	23.5	8.6	3.1	0



*Kanwar*  
Principal  
PRINCIPAL  
CHIRALA ENGINEERING COLLEGE  
CHIRALA,



where professionalism speaks

# CHIRALA ENGINEERING COLLEGE

RAMAPURAM BEACH ROAD, CHIRALA, ANDHRA PRADESH - 523157.

Approved by AICTE, Affiliated to JNTUK, Kakinada.

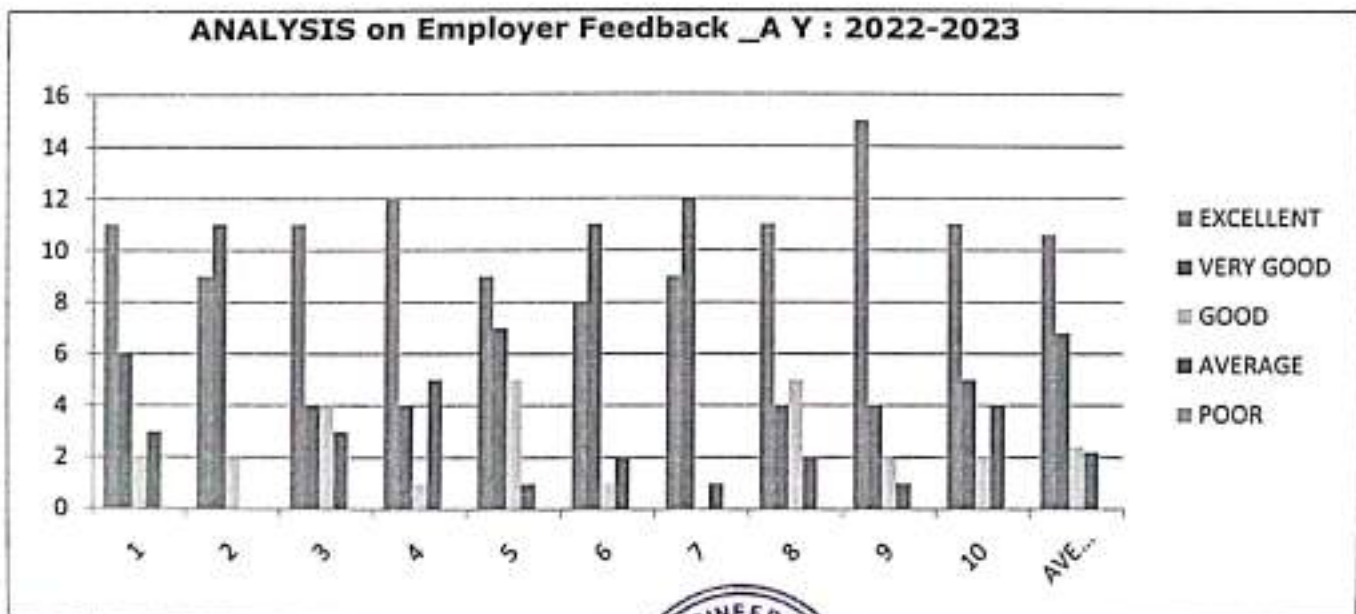
(ISO 9001:2008 Certified Institution)

## SUMMARY OF EMPLOYER/INDUSTRY FEEDBACK

Employer feedback is collected and analyzed taken on curriculum designed by JNTUK. We have received total 22 employer feedback from department of electronics and communication engineering for the Academic year 2022-2023.

S.NO.	ATTRIBUTES	5	4	3	2	1
1.	How do you rate the technical knowledge of the students?	11	6	2	3	
2.	How do you rate the relevance of the curriculum for employability?	9	11	2		
3.	How do you rate the students' ability to work in teams?	11	4	4	3	
4.	How do you rate the students managerial and leadership qualities?	12	4	1	5	
5.	How do you rate the students' ability to learn and mould themselves in the industrial practices?	9	7	5	1	
6.	How do you rate the students' contribution to the growth of industries?	8	11	1	2	
7.	How do you rate the communication skills of the students?	9	12		1	
8.	How do you rate the offering of electives in relation to the technological advancements?	11	4	5	2	
9.	How do you rate the training and placement support in the curriculum?	15	4	2	1	
10.	How do you rate the overall learning ambience of the college?	11	5	2	4	
Average		10.6	6.8	2.4	2.2	0

### ANALYSIS on Employer Feedback \_A Y : 2022-2023



*[Signature]*  
Principal  
CHIRALA ENGINEERING COLLEGE  
CHIRALA.





where professionalism speaks

# CHIRALA ENGINEERING COLLEGE

RAMAPURAM BEACH ROAD, CHIRALA, Andhra Pradesh – 523157.

Approved by AICTE, Affiliated to JNTUK, Kakinada.

(ISO 9001:2008 Certified Institution)

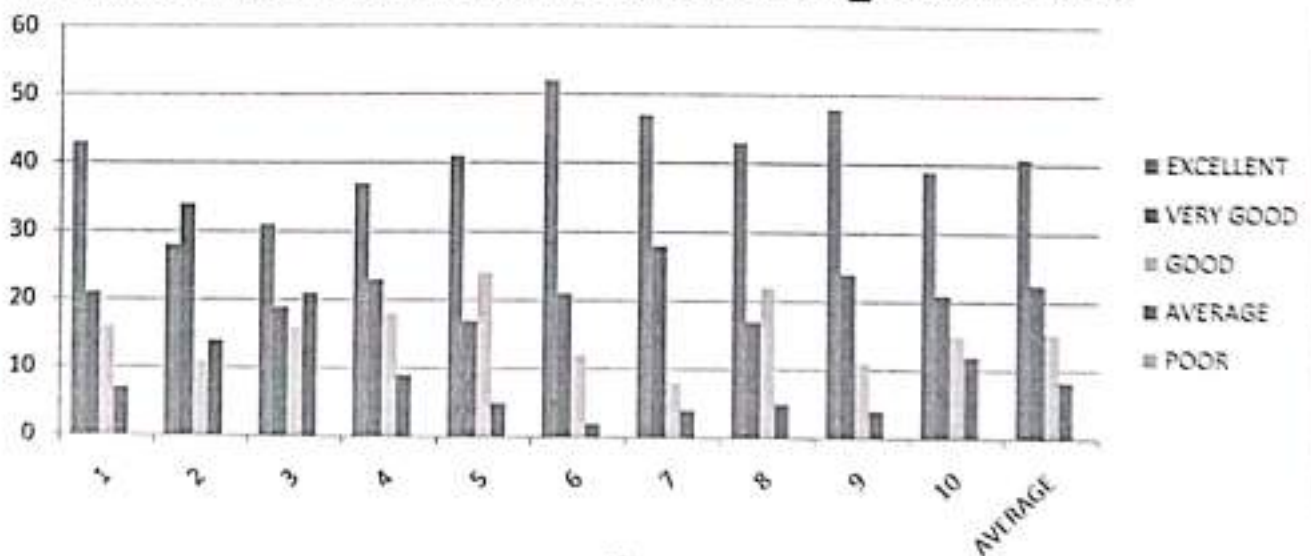
## SUMMARY of ALUMNI FEEDBACK ON CURRICULUM (A.Y-2022-2023)

This feedback on Curriculum, Teaching, Learning and Evaluation is intended to collect information to obtain alumni input on the quality of education they received and the level of preparation they had at University. The purpose of this survey is to assess the quality of the academic program. We seek your help in completing this survey

\*Rating score: Excellent (5), Very Good(4), Good(3), Average (2), Below Average(1)

S No	Questionnaire	5	4	3	2	1
1.	How do you rate the appropriateness of curriculum and syllabus content for your placement/higher education?	43	21	16	7	
2.	How do you rate co-curricular activities arranged during your study period?	28	34	11	14	
3.	How do you rate the availability of relevant reading materials and digital resources in the Library?	31	19	16	21	
4.	How do you rate the usefulness of institute-industry tie ups?	37	23	18	9	
5.	How do you rate experiential learning (hands-on) of the courses?	41	17	24	5	
6.	How do you rate the transparency of the academic processes of the institute?	52	21	12	2	
7.	How do you rate the academic initiatives undertaken for the benefit of students?	47	28	8	4	
8.	How do you rate the improvement of your inter and intra personal skills during your study period?	43	17	22	5	
9.	How do you rate the training and placement support in the curriculum?	48	24	11	4	
10.	How do you rate the leaning ambience of the college?	39	21	15	12	
	AVERAGE	40.9	22.5	15.3	8.3	0

## SUMMARY of ALUMNI FEEDBACK on CURRICULUM \_AY 2022 - 2023



*basu*  
Principal  
CHIRALA ENGINEERING COLLEGE  
CHIRALA.



where professionalism speaks

# CHIRALA ENGINEERING COLLEGE

RAMAPURAM BEACH ROAD, CHIRALA, ANDHRA PRADESH - 523157.

Approved by AICTE, Affiliated to JNTUK, Kakinada.

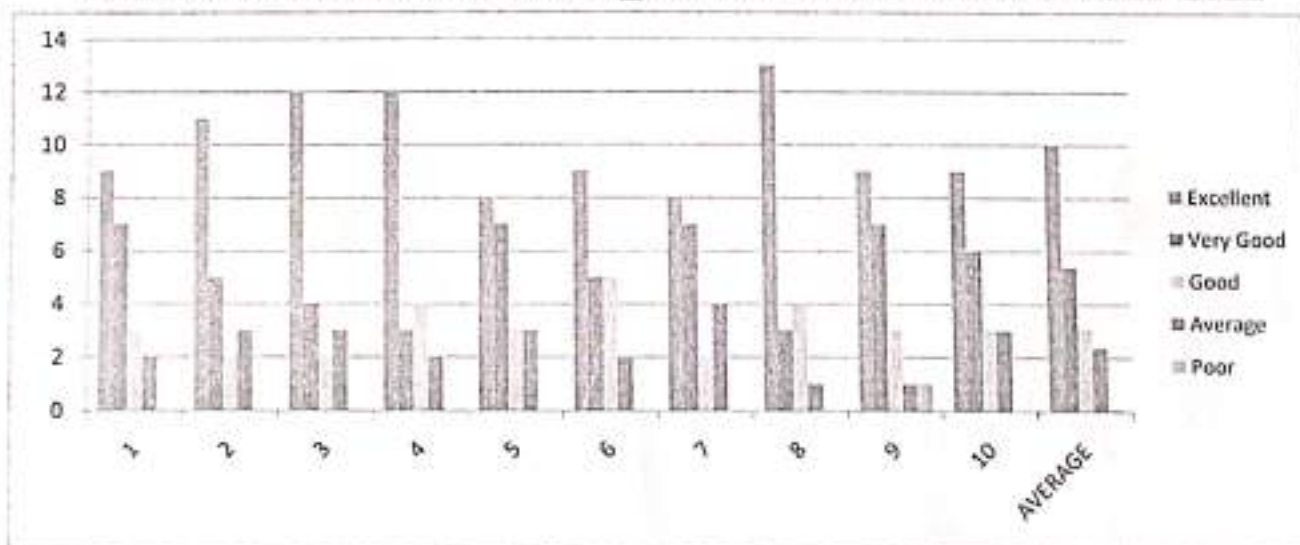
(ISO 9001:2008 Certified Institution)


## SUMMARY OF STUDENT'S FEEDBACK FORM ON CURRICULUM

Program Year	Year-Semester	Branch	Total No. Of Samples
2021 - 2022	II-I	ECE	21

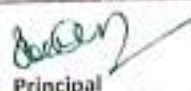
S.NO.	ATTRIBUTES/PARAMETERS	Excellent	Very Good	Good	Average	Poor
1	Rate the syllabus you studied in relation to the competencies required from the courses.	9	7	3	2	
2	The credit allotment for the course is appropriate.	11	5	2	3	
3	The depth of the course content is appropriate in relation to the intended course outcomes (COs).	12	4	2	3	
4	The syllabus's modules are properly ordered.	12	3	4	2	
5	The curriculum helped me increase my abilities to develop, analyze, and solve problems.	8	7	3	3	
6	Rate the evaluation scheme created for each course.	9	5	5	2	
7	The course materials are readily available.	8	7	2	4	
8	Calculate the proportion (%) of courses that have lab components.	13	3	4	1	
9	The laboratory trials improved conceptual knowledge and allowed for the connection of theory to practice (Experiential Learning).	9	7	3	1	1
10	The entire syllabus was completed in the class by the teacher	9	6	3	3	
AVERAGE		10	5.4	3.1	2.4	0.1

## ANALYSIS on Student Feedback\_ II B.Tech-I Semester AY 2021-2022



  
 Head of the Department  
 Department of E.C.E  
 CHIRALA ENGINEERING COLLEGE  
 CHIRALA-523157



  
 Principal  
**PRINCIPAL**  
 CHIRALA ENGINEERING COLLEGE  
 CHIRALA





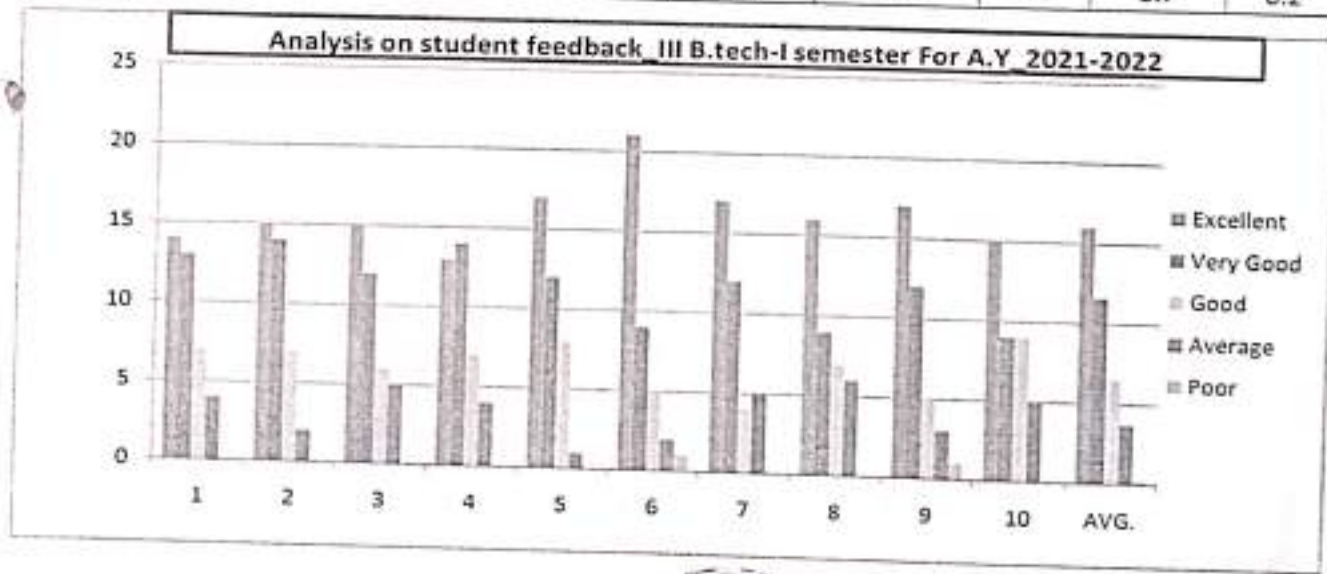
where professionalism speaks

**CHIRALA ENGINEERING COLLEGE**  
 RAMAPURAM BEACH ROAD, CHIRALA, ANDHRA PRADESH - 523157.  
 Approved by AICTE, Affiliated to JNTUK, Kakinada.  
 (ISO 9001:2008 Certified Institution)

**SUMMARY OF STUDENT'S FEEDBACK FORM ON CURRICULUM**

Program Year	Year-Semester	Branch	Total No. Of Samples
2021 - 2022	III-I	ECE	38

S.NO.	ATTRIBUTES/PARAMETERS	Excellent	Very Good	Good	Average	Poor
1	Rate the syllabus you studied in relation to the competencies required from the courses.	14	13	7	4	
2	The credit allotment for the course is appropriate.	15	14	7	2	
3	The depth of the course content is appropriate in relation to the intended course outcomes (COs).	15	12	6	5	
4	The syllabus's modules are properly ordered.	13	14	7	4	
5	The curriculum helped me increase my abilities to develop, analyze, and solve problems.	17	12	8	1	
6	Rate the evaluation scheme created for each course.	21	9	5	2	1
7	The course materials are readily available.	17	12	4	5	
8	Calculate the proportion (%) of courses that have lab components.	16	9	7	6	
9	The laboratory trials improved conceptual knowledge and allowed for the connection of theory to practice (Experiential Learning).	17	12	5	3	1
10	The entire syllabus was completed in the class by the teacher	15	9	9	5	
	AVERAGE	16	11.6	6.5	3.7	0.2



Head of the Department  
 Department of E.C.E  
 CHIRALA ENGINEERING COLLEGE  
 CHIRALA-523157



Principal  
 CHIRALA ENGINEERING COLLEGE  
 CHIRALA



## CHIRALA ENGINEERING COLLEGE

RAMAPURAM BEACH ROAD, CHIRALA, ANDHRA PRADESH – 523157.

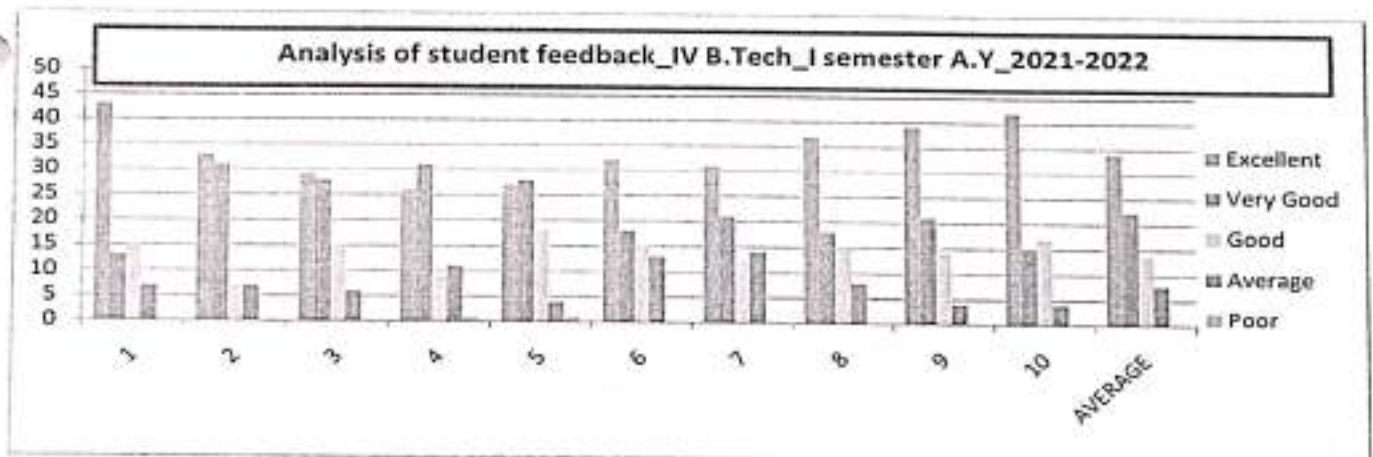
Approved by AICTE, Affiliated to JNTUK, Kakinada.

(ISO 9001:2008 Certified Institution)

### SUMMARY OF STUDENT'S FEEDBACK FORM ON CURRICULUM

Program Year	Year-Semester	Branch	Total No. Of Samples
2021 - 2022	IV-I	ECE	78

S.NO.	ATTRIBUTES/PARAMETERS	Excellent	Very Good	Good	Average	Poor
1	Rate the syllabus you studied in relation to the competencies required from the courses.	43	13	15	7	
2	The credit allotment for the course is appropriate.	33	31	7	7	
3	The depth of the course content is appropriate in relation to the intended course outcomes (COs).	29	28	15	6	
4	The syllabus's modules are properly ordered.	26	31	9	11	1
5	The curriculum helped me increase my abilities to develop, analyze, and solve problems.	27	28	18	4	1
6	Rate the evaluation scheme created for each course.	32	18	15	13	
7	The course materials are readily available.	31	21	12	14	
8	Calculate the proportion (%) of courses that have lab components.	37	18	15	8	
9	The laboratory trials improved conceptual knowledge and allowed for the connection of theory to practice (Experiential Learning).	39	21	14	4	
10	The entire syllabus was completed in the class by the teacher	42	15	17	4	
	AVERAGE	33.9	22.4	13.7	7.8	0.2



  
 Head of the Department  
 Department of E.C.I  
 CHIRALA ENGINEERING COLLEGE  
 CHIRALA-523157



  
 Principal  
 PRINCIPAL  
 CHIRALA ENGINEERING COLLEGE  
 CHIRALA





where professionalism speaks

# CHIRALA ENGINEERING COLLEGE

RAMAPURAM BEACH ROAD, CHIRALA, ANDHRA PRADESH - 523157.

Approved by AICTE, Affiliated to JNTUK, Kakinada.

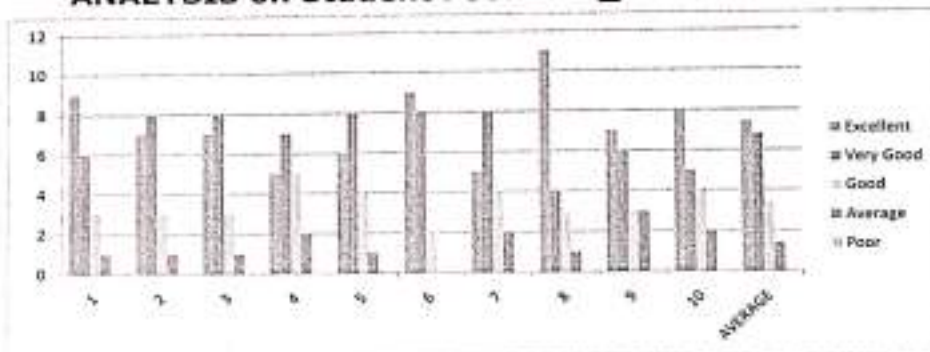
(ISO 9001:2008 Certified Institution)

## SUMMARY OF STUDENT'S FEEDBACK FORM ON CURRICULUM

Program Year	Year-Semester	Branch	Total No. Of Samples
2021 - 2022	II-II	ECE	19

S.NO.	ATTRIBUTES/PARAMETERS	Excellent	Very Good	Good	Average	Poor
1	Rate the syllabus you studied in relation to the competencies required from the courses.	9	6	3	1	
2	The credit allotment for the course is appropriate.	7	8	3	1	
3	The depth of the course content is appropriate in relation to the intended course outcomes (COs).	7	8	3	1	
4	The syllabus's modules are properly ordered.	5	7	5	2	
5	The curriculum helped me increase my abilities to develop, analyze, and solve problems.	6	8	4	1	
6	Rate the evaluation scheme created for each course.	9	8	2		
7	The course materials are readily available.	5	8	4	2	
8	Calculate the proportion (%) of courses that have lab components.	11	4	3	1	
9	The laboratory trials improved conceptual knowledge and allowed for the connection of theory to practice (Experiential Learning).	7	6	3	3	
10	The entire syllabus was completed in the class by the teacher	8	5	4	2	
AVERAGE		7.4	6.8	3.4	1.4	

### ANALYSIS on Student Feedback\_ II B.Tech-II Semester AY 2021-2022



Head of the Department  
Department of E.C.E  
CHIRALA ENGINEERING COLLEGE  
CHIRALA-523157



Principal  
CHIRALA ENGINEERING COLLEGE  
CHIRALA



where professionalism speaks

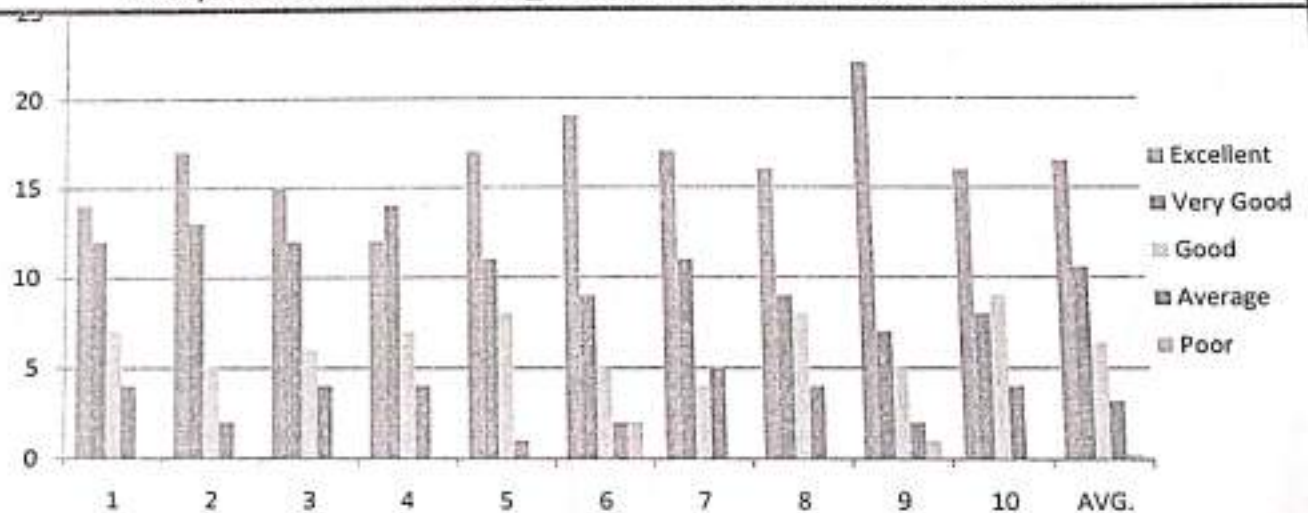
**CHIRALA ENGINEERING COLLEGE**  
RAMAPURAM BEACH ROAD, CHIRALA, ANDHRA PRADESH - 523157.  
Approved by AICTE, Affiliated to JNTUK, Kakinada.  
(ISO 9001:2008 Certified Institution)

**SUMMARY OF STUDENT'S FEEDBACK FORM ON CURRICULUM**

Program Year	Year-Semester	Branch	Total No. Of Samples
2021 - 2022	III-II	ECE	37

S.NO.	ATTRIBUTES/PARAMETERS	Excellent	Very Good	Good	Average	Poor
1	Rate the syllabus you studied in relation to the competencies required from the courses.	14	12	7	4	
2	The credit allotment for the course is appropriate.	17	13	5	2	
3	The depth of the course content is appropriate in relation to the intended course outcomes (COs).	15	12	6	4	
4	The syllabus's modules are properly ordered.	12	14	7	4	
5	The curriculum helped me increase my abilities to develop, analyze, and solve problems.	17	11	8	1	
6	Rate the evaluation scheme created for each course.	19	9	5	2	2
7	The course materials are readily available.	17	11	4	5	
8	Calculate the proportion (%) of courses that have lab components.	16	9	8	4	
9	The laboratory trials improved conceptual knowledge and allowed for the connection of theory to practice (Experiential Learning).	22	7	5	2	1
10	The entire syllabus was completed in the class by the teacher	16	8	9	4	
	AVERAGE	16.5	10.6	6.4	3.2	0.3

**Analysis on student feedback\_III B.Tech-II Semester For A.Y\_2021-2022**



*[Signature]*  
Head of the Department  
Department of E.C.E  
CHIRALA ENGINEERING COLLEGE  
CHIRALA-523157



*[Signature]*  
Principal  
PRINCIPAL  
CHIRALA ENGINEERING COLLEGE  
CHIRALA



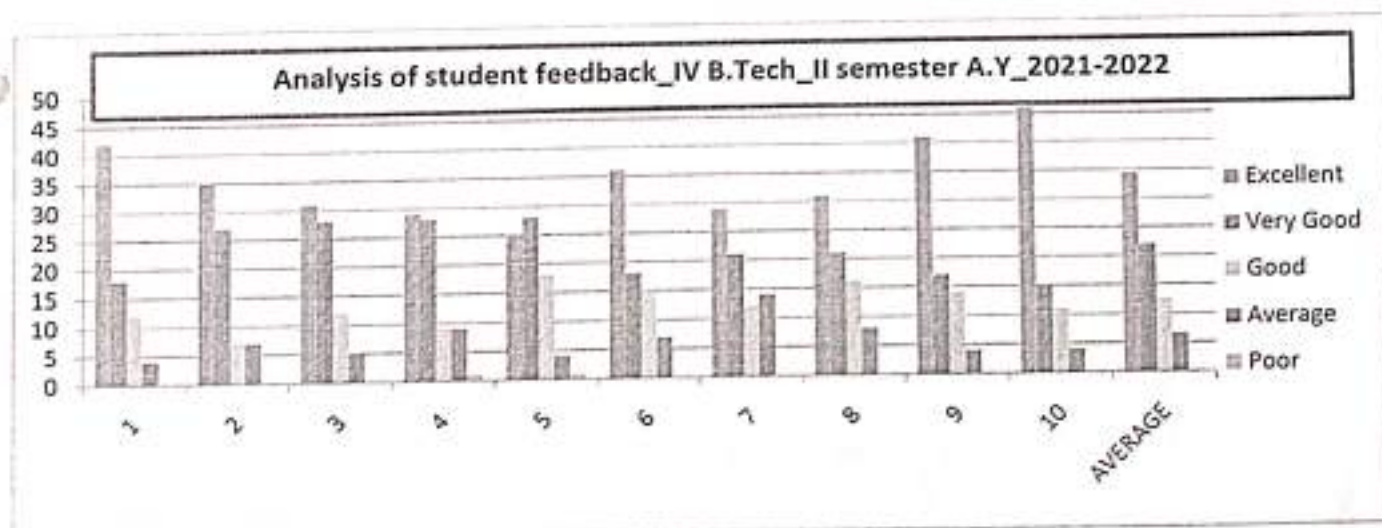


**CHIRALA ENGINEERING COLLEGE**  
 RAMAPURAM BEACH ROAD, CHIRALA, ANDHRA PRADESH - 523157.  
 Approved by AICTE, Affiliated to JNTUK, Kakinada.  
 (ISO 9001:2008 Certified Institution)

**SUMMARY OF STUDENT'S FEEDBACK FORM ON CURRICULUM**

Program Year	Year-Semester	Branch	Total No. Of Samples
2021 - 2022	IV-II	ECE	76

S.NO.	ATTRIBUTES/PARAMETERS	Excellent	Very Good	Good	Average	Poor
1	Rate the syllabus you studied in relation to the competencies required from the courses.	42	18	12	4	
2	The credit allotment for the course is appropriate.	35	27	7	7	
3	The depth of the course content is appropriate in relation to the intended course outcomes (COs).	31	28	12	5	
4	The syllabus's modules are properly ordered.	29	28	9	9	1
5	The curriculum helped me increase my abilities to develop, analyze, and solve problems.	25	28	18	4	1
6	Rate the evaluation scheme created for each course.	36	18	15	7	
7	The course materials are readily available.	29	21	12	14	
8	Calculate the proportion (%) of courses that have lab components.	31	21	16	8	
9	The laboratory trials improved conceptual knowledge and allowed for the connection of theory to practice (Experiential Learning).	41	17	14	4	
10	The entire syllabus was completed in the class by the teacher	46	15	11	4	
	<b>AVERAGE</b>	<b>34.5</b>	<b>22.1</b>	<b>12.6</b>	<b>6.6</b>	<b>0.2</b>



*[Signature]*  
 Head of the Department  
 Department of E.C.E  
 CHIRALA ENGINEERING COLLEGE  
 CHIRALA-523157



*[Signature]*  
 Principal  
 PRINCIPAL  
 CHIRALA ENGINEERING COLLEGE  
 CHIRALA



where professionalism speaks

# CHIRALA ENGINEERING COLLEGE

RAMAPURAM BEACH ROAD, CHIRALA, Andhra Pradesh - 523157.

Approved by AICTE, Affiliated to JNTUK, Kakinada.

(ISO 9001:2008 Certified Institution)

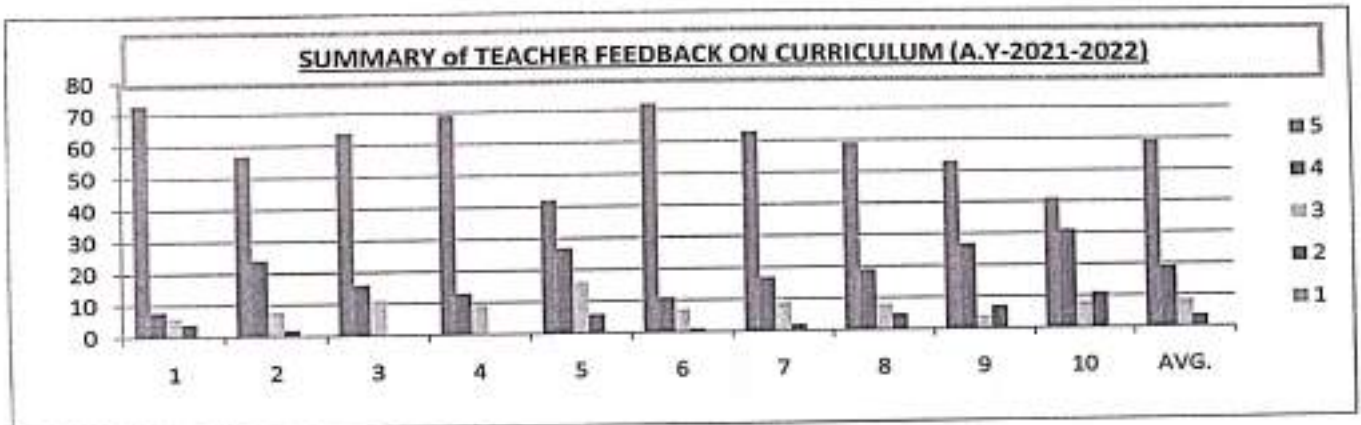
## SUMMARY of TEACHER FEEDBACK ON CURRICULUM (A.Y-2021-2022)

The questionnaire is intended to collect information relating to your satisfaction towards the curriculum, learning and evaluation. The information provided by you will be kept confidential and will be used as feedback for quality improvement of the program of studies/institution.

Directions: a score for each item please indicate your level of satisfaction with the following statement by choosing between 1 and 5.

\*Rating score: Excellent (5), Very Good(4), Good(3), Average (2), Below Average(1)

S No	Curriculum, Teaching, Learning and Evaluation	5	4	3	2	1
1.	Curriculum and Syllabus are need based	73	8	6	4	
2.	The course outcomes are well defined and clear.	57	24	8	2	
3.	Sufficient number of relevant reading materials and digital resources are available in the Library	64	16	11		
4.	The course has good balance between theory and application.	69	13	9		
5.	The syllabus of this course increased my knowledge and perspective in the subject area.	42	27	16	6	
6.	I am able to achieve the minimum required course outcome attainment level for my class	72	11	7	1	
7.	I have taken sufficient steps to provide assistance to slow learners	63	17	9	2	
8.	I have contributed to the curriculum and/or syllabus development.	59	19	8	5	
9.	I have the freedom to propose, modify, suggest and incorporate new topics in the syllabus through proper forum.	53	27	4	7	
10.	I have the freedom to adopt new techniques/education tools strategies in teaching.	41	31	8	11	
	AVERAGE	59.3	19.3	8.6	3.8	0



*basel*  
Principal  
CHIRALA ENGINEERING COLLEGE  
CHIRALA.





where professionalism speaks

# CHIRALA ENGINEERING COLLEGE

RAMAPURAM BEACH ROAD, CHIRALA, ANDHRA PRADESH - 523157.

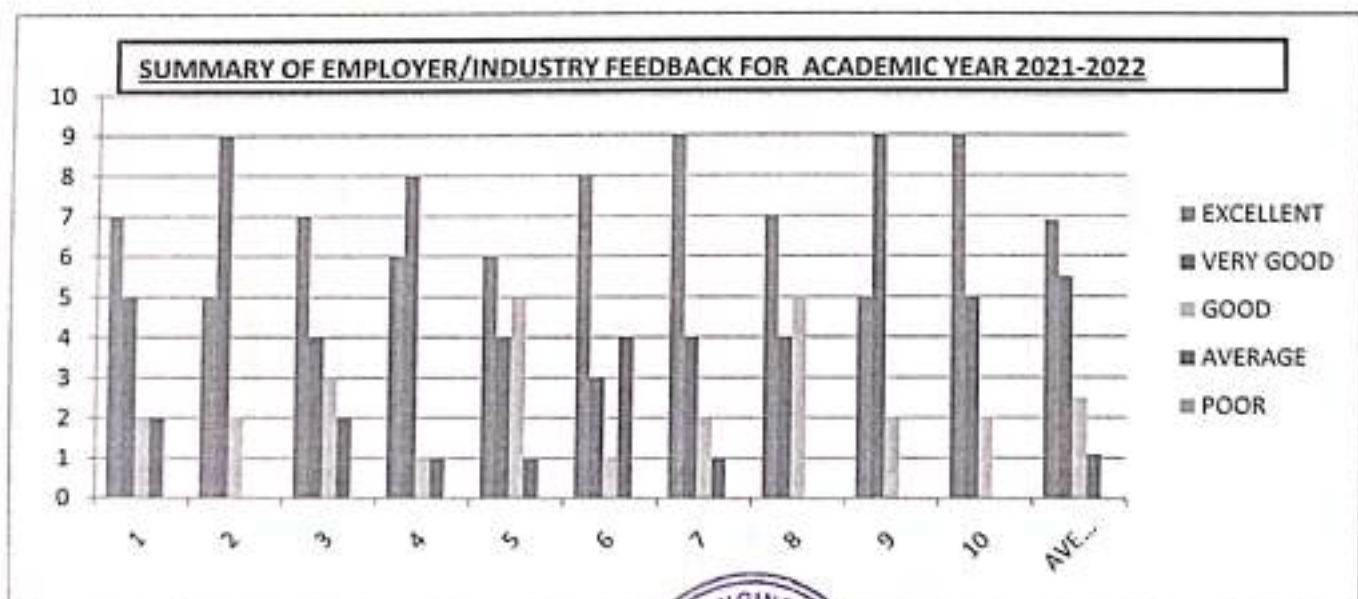
Approved by AICTE, Affiliated to JNTUK, Kakinada.

(ISO 9001:2008 Certified Institution)

## SUMMARY OF EMPLOYER/INDUSTRY FEEDBACK

Employer feedback is collected and analyzed taken on curriculum designed by JNTUK. We have received total 16 employer feedback from department of electronics and communication engineering for the Academic year 2021-2022.

S.NO.	ATTRIBUTES	5	4	3	2	1
1.	How do you rate the technical knowledge of the students?	7	5	2	2	
2.	How do you rate the relevance of the curriculum for employability?	5	9	2		
3.	How do you rate the students' ability to work in teams?	7	4	3	2	
4.	How do you rate the students managerial and leadership qualities?	6	8	1	1	
5.	How do you rate the students' ability to learn and mould themselves in the industrial practices?	6	4	5	1	
6.	How do you rate the students' contribution to the growth of industries?	8	3	1	4	
7.	How do you rate the communication skills of the students?	9	4	2	1	
8.	How do you rate the offering of electives in relation to the technological advancements?	7	4	5		
9.	How do you rate the training and placement support in the curriculum?	5	9	2		
10.	How do you rate the overall learning ambience of the college?	9	5	2		
Average		6.9	5.5	2.5	1.1	0



*[Signature]*  
PRINCIPAL  
CHIRALA ENGINEERING COLLEGE  
CHIRALA.



where professionalism speaks

# CHIRALA ENGINEERING COLLEGE

RAMAPURAM BEACH ROAD, CHIRALA, Andhra Pradesh - 523157.

Approved by AICTE, Affiliated to JNTUK, Kakinada.

(ISO 9001:2008 Certified Institution)

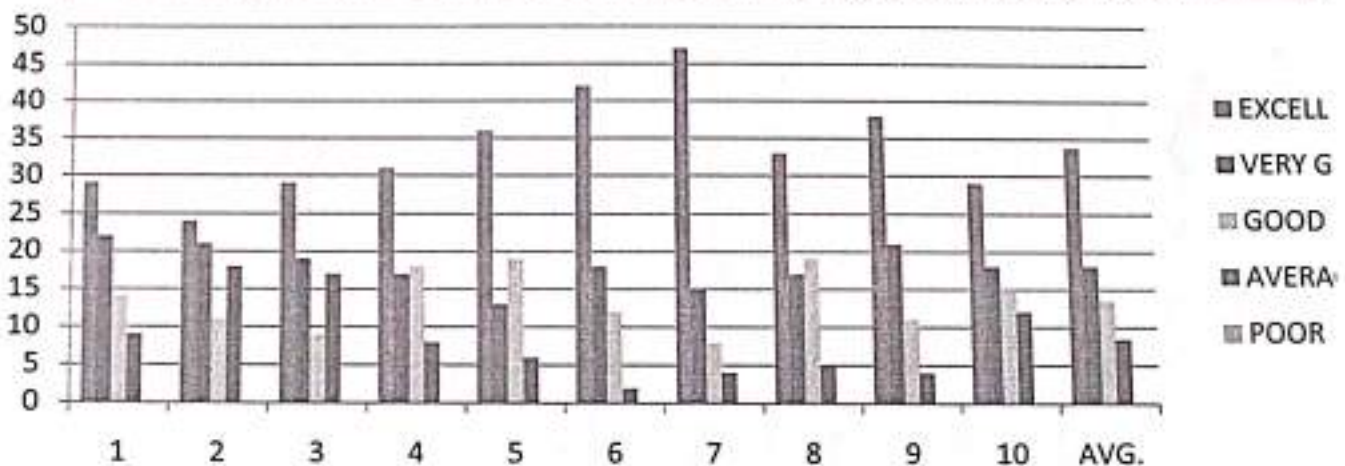
## SUMMARY of ALUMNI FEEDBACK ON CURRICULUM (A.Y-2021-2022)

This feedback on Curriculum, Teaching, Learning and Evaluation is intended to collect information to obtain alumni input on the quality of education they received and the level of preparation they had at University. The purpose of this survey is to assess the quality of the academic program. We seek your help in completing this survey

\*Rating score: Excellent (5), Very Good(4), Good(3), Average (2), Below Average(1)

S No	Questionnaire	5	4	3	2	1
1.	How do you rate the appropriateness of curriculum and syllabus content for your placement/higher education?	29	22	14	9	
2.	How do you rate co-curricular activities arranged during your study period?	24	21	11	18	
3.	How do you rate the availability of relevant reading materials and digital resources in the Library?	29	19	9	17	
4.	How do you rate the usefulness of institute-industry tie ups?	31	17	18	8	
5.	How do you rate experiential learning (hands-on) of the courses?	36	13	19	6	
6.	How do you rate the transparency of the academic processes of the institute?	42	18	12	2	
7.	How do you rate the academic initiatives undertaken for the benefit of students?	47	15	8	4	
8.	How do you rate the improvement of your inter and intra personal skills during your study period?	33	17	19	5	
9.	How do you rate the training and placement support in the curriculum?	38	21	11	4	
10.	How do you rate the leaning ambience of the college?	29	18	15	12	
	AVERAGE	33.8	18.1	13.6	8.5	0

### SUMMARY OF ALUMNI FEEDBACK ON CURRICULUM AY 2021-2022



*[Signature]*  
Principal  
CHIRALA ENGINEERING COLLEGE  
CHIRALA.





where professionals speak

# CHIRALA ENGINEERING COLLEGE

RAMAPURAM BEACH ROAD, CHIRALA, ANDHRA PRADESH - 523157.

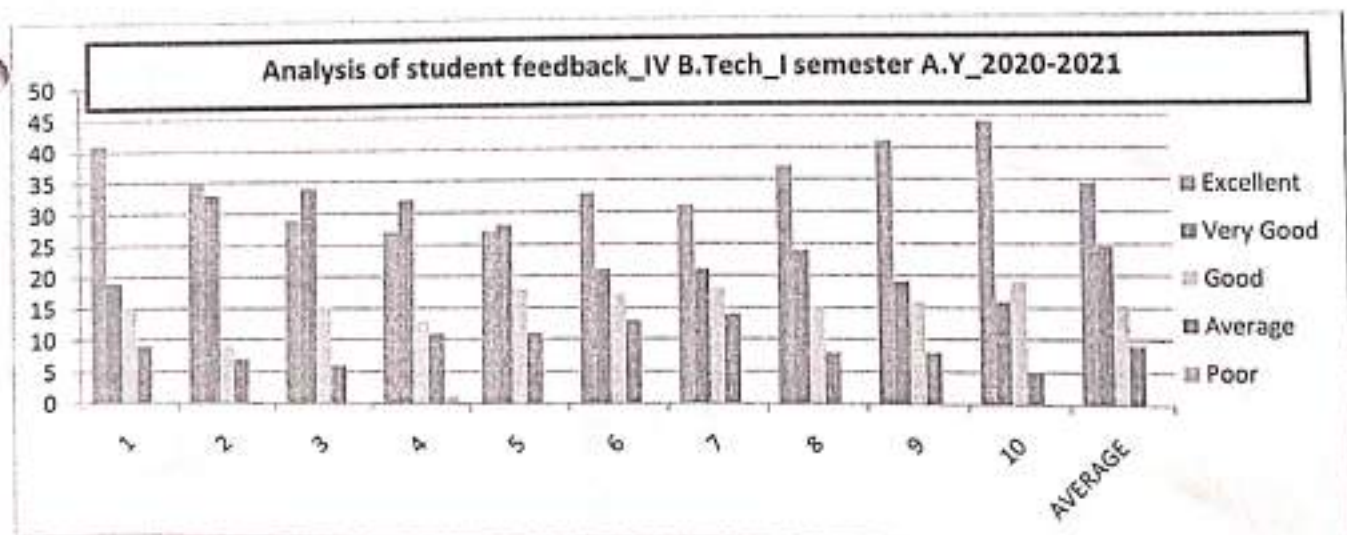
Approved by AICTE, Affiliated to JNTUK, Kakinada.

(ISO 9001:2008 Certified Institution)

## SUMMARY OF STUDENT'S FEEDBACK FORM ON CURRICULUM

Program Year	Year-Semester	Branch	Total No. Of Samples
2020 - 2021	IV-I	ECE	84

S.NO.	ATTRIBUTES/PARAMETERS	Excellent	Very Good	Good	Average	Poor
1	Rate the syllabus you studied in relation to the competencies required from the courses.	41	19	15	9	
2	The credit allotment for the course is appropriate.	35	33	9	7	
3	The depth of the course content is appropriate in relation to the intended course outcomes (COs).	29	34	15	6	
4	The syllabus's modules are properly ordered.	27	32	13	11	1
5	The curriculum helped me increase my abilities to develop, analyze, and solve problems.	27	28	18	11	
6	Rate the evaluation scheme created for each course.	33	21	17	13	
7	The course materials are readily available.	31	21	18	14	
8	Calculate the proportion (%) of courses that have lab components.	37	24	15	8	
9	The laboratory trials improved conceptual knowledge and allowed for the connection of theory to practice (Experiential Learning).	41	19	16	8	
10	The entire syllabus was completed in the class by the teacher	44	16	19	5	
	AVERAGE	34.5	24.7	15.5	9.2	0.1



Dr. R.A. Prabhu  
 Head of the Department  
 Head of the Department,  
 Department of E.C.E  
 CHIRALA ENGINEERING COLLEGE  
 CHIRALA-523157



*[Signature]*  
 Principal  
 PRINCIPAL  
 CHIRALA ENGINEERING COLLEGE  
 CHIRALA



where professionalism speaks

**CHIRALA ENGINEERING COLLEGE**  
 RAMAPURAM BEACH ROAD, CHIRALA, ANDHRA PRADESH – 523157.  
 Approved by AICTE, Affiliated to JNTUK, Kakinada.  
 (ISO 9001:2008 Certified Institution)

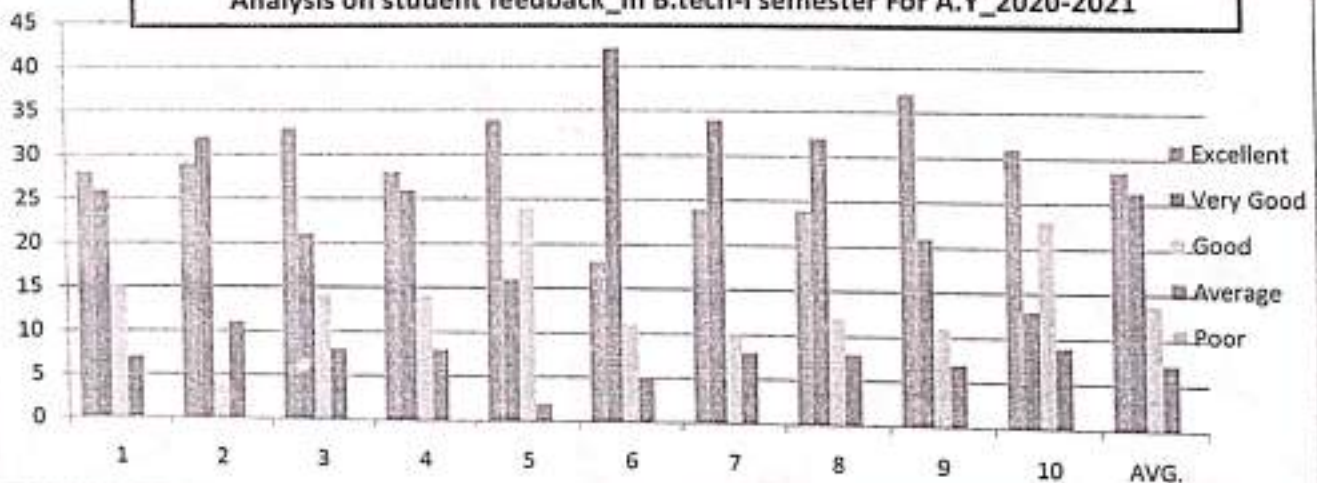
**SUMMARY OF STUDENT'S FEEDBACK FORM ON CURRICULUM**

Program Year	Year-Semester	Branch	Total No. Of Samples
2020 - 2021	III-I	ECE	76

S.NO.	ATTRIBUTES/PARAMETERS	Excellent	Very Good	Good	Average	Poor
1	Rate the syllabus you studied in relation to the competencies required from the courses.	28	26	15	7	
2	The credit allotment for the course is appropriate.	29	32	4	11	
3	The depth of the course content is appropriate in relation to the intended course outcomes (COs).	33	21	14	8	
4	The syllabus's modules are properly ordered.	28	26	14	8	
5	The curriculum helped me increase my abilities to develop, analyze, and solve problems.	34	16	24	2	
6	Rate the evaluation scheme created for each course.	18	42	11	5	
7	The course materials are readily available.	24	34	10	8	
8	Calculate the proportion (%) of courses that have lab components.	24	32	12	8	
9	The laboratory trials improved conceptual knowledge and allowed for the connection of theory to practice (Experiential Learning).	37	21	11	7	
10	The entire syllabus was completed in the class by the teacher	31	13	23	9	
	AVERAGE	28.6	26.3	13.8	7.3	

**Analysis on student feedback\_III B.tech-I semester For A.Y\_2020-2021**



*Dr. R. A. Devala*  
 Head of the Department  
 Head of the Department  
 Department of E.C.E  
 CHIRALA ENGINEERING COLLEGE  
 CHIRALA-523157



*Cella*  
 Principal  
 PRINCIPAL  
 CHIRALA ENGINEERING COLLEGE  
 CHIRALA





where professionalism speaks

# CHIRALA ENGINEERING COLLEGE

RAMAPURAM BEACH ROAD, CHIRALA, ANDHRA PRADESH - 523157.

Approved by AICTE, Affiliated to JNTUK, Kakinada.

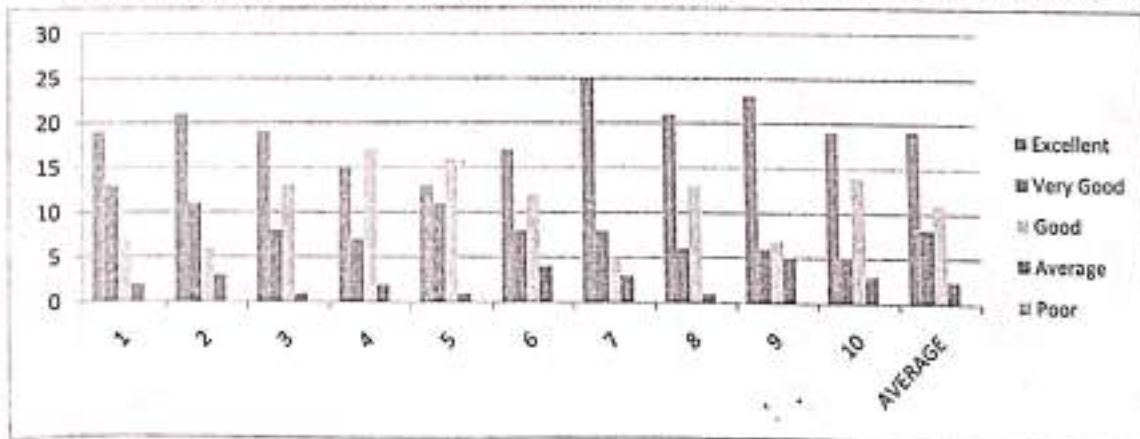
(ISO 9001:2008 Certified Institution)

## SUMMARY OF STUDENT'S FEEDBACK FORM ON CURRICULUM

Program Year	Year-Semester	Branch	Total No. Of Samples
2020 - 2021	II-I	ECE	41

S.NO.	ATTRIBUTES/PARAMETERS	Excellent	Very Good	Good	Average	Poor
1	Rate the syllabus you studied in relation to the competencies required from the courses.	19	13	7	2	
2	The credit allotment for the course is appropriate.	21	11	6	3	
3	The depth of the course content is appropriate in relation to the intended course outcomes (COs).	19	8	13	1	
4	The syllabus's modules are properly ordered.	15	7	17	2	
5	The curriculum helped me increase my abilities to develop, analyze, and solve problems.	13	11	16	1	
6	Rate the evaluation scheme created for each course.	17	8	12	4	
7	The course materials are readily available.	25	8	5	3	
8	Calculate the proportion (%) of courses that have lab components.	21	6	13	1	
9	The laboratory trials improved conceptual knowledge and allowed for the connection of theory to practice (Experiential Learning).	23	6	7	5	
10	The entire syllabus was completed in the class by the teacher	19	5	14	3	
AVERAGE		19.2	8.3	11	2.5	

## ANALYSIS on Student Feedback\_ II B.Tech-I Semester AY 2020-2021



Dr. R.A. Isabir  
Head of the Department  
Head of the Department  
Department of E.C.E  
CHIRALA ENGINEERING COLLEGE  
CHIRALA-523157



*[Signature]*  
Principal  
PRINCIPAL  
CHIRALA ENGINEERING COLLEGE  
CHIRALA



where professionalism speaks

# CHIRALA ENGINEERING COLLEGE

RAMAPURAM BEACH ROAD, CHIRALA, ANDHRA PRADESH - 523157.

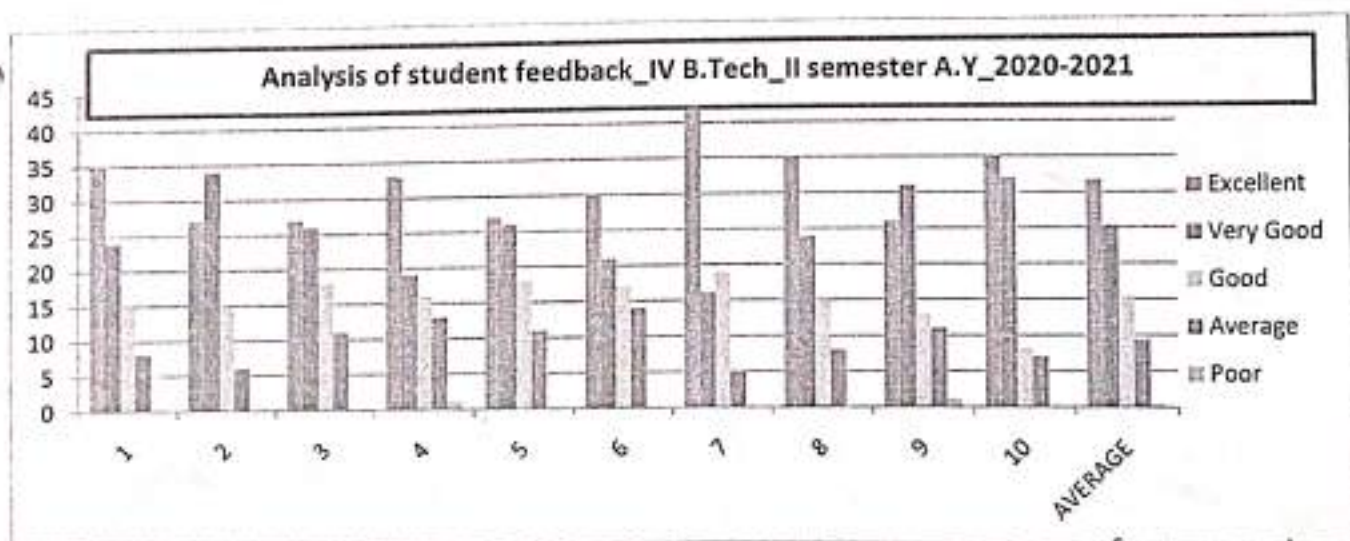
Approved by AICTE, Affiliated to JNTUK, Kakinada.

(ISO 9001:2008 Certified Institution)

## SUMMARY OF STUDENT'S FEEDBACK FORM ON CURRICULUM

Program Year	Year-Semester	Branch	Total No. Of Samples
2020 - 2021	IV-II	ECE	82

S.NO.	ATTRIBUTES/PARAMETERS	Excellent	Very Good	Good	Average	Poor
1	Rate the syllabus you studied in relation to the competencies required from the courses.	35	24	15	8	
2	The credit allotment for the course is appropriate.	27	34	15	6	
3	The depth of the course content is appropriate in relation to the intended course outcomes (COs).	27	26	18	11	
4	The syllabus's modules are properly ordered.	33	19	16	13	1
5	The curriculum helped me increase my abilities to develop, analyze, and solve problems.	27	26	18	11	
6	Rate the evaluation scheme created for each course.	30	21	17	14	
7	The course materials are readily available.	42	16	19	5	
8	Calculate the proportion (%) of courses that have lab components.	35	24	15	8	
9	The laboratory trials improved conceptual knowledge and allowed for the connection of theory to practice (Experiential Learning).	26	31	13	11	1
10	The entire syllabus was completed in the class by the teacher	35	32	8	7	
	AVERAGE	31.7	25.3	15.4	9.4	0.2



Dr. R. A. Dabolu  
 Head of the Department  
 Department of E.C.E.  
 CHIRALA ENGINEERING COLLEGE  
 CHIRALA - 523157



*[Signature]*  
 Principal  
 CHIRALA ENGINEERING COLLEGE  
 CHIRALA





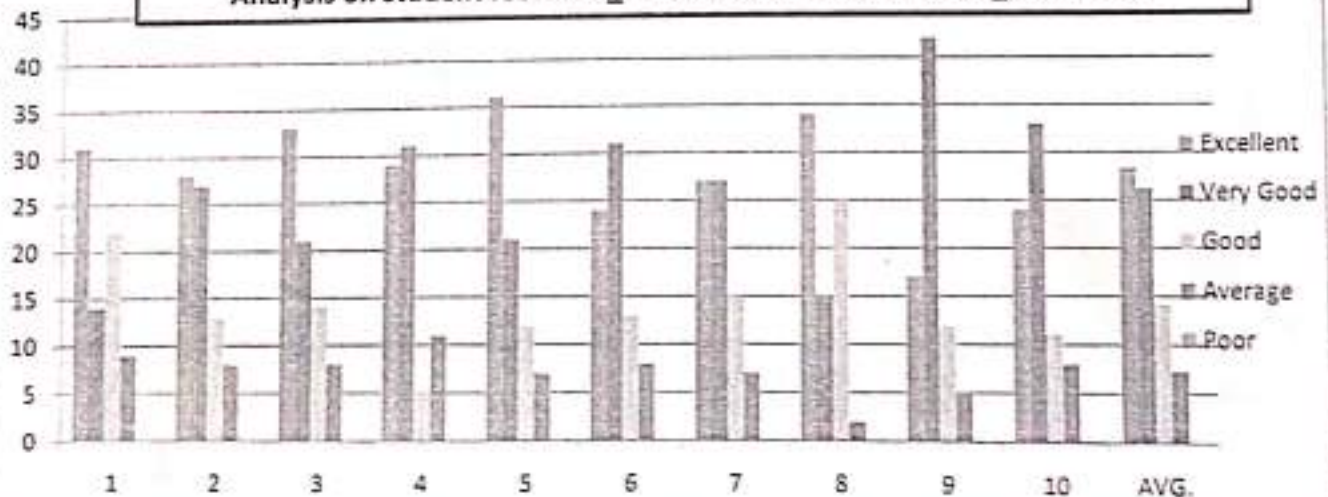
where professionalism speaks

**CHIRALA ENGINEERING COLLEGE**  
 RAMAPURAM BEACH ROAD, CHIRALA, ANDHRA PRADESH - 523157.  
 Approved by AICTE, Affiliated to JNTUK, Kakinada.  
 (ISO 9001:2008 Certified Institution)

**SUMMARY OF STUDENT'S FEEDBACK FORM ON CURRICULUM**

Program Year	Year-Semester	Branch	Total No. Of Samples			
2020 - 2021	III-II	ECE	77			
S.NO.	ATTRIBUTES/PARAMETERS	Excellent	Very Good	Good	Average	Poor
1	Rate the syllabus you studied in relation to the competencies required from the courses.	31	14	22	9	
2	The credit allotment for the course is appropriate.	28	27	13	8	
3	The depth of the course content is appropriate in relation to the intended course outcomes (COs).	33	21	14	8	
4	The syllabus's modules are properly ordered.	29	31	5	11	
5	The curriculum helped me increase my abilities to develop, analyze, and solve problems.	36	21	12	7	
6	Rate the evaluation scheme created for each course.	24	31	13	8	
7	The course materials are readily available.	27	27	15	7	
8	Calculate the proportion (%) of courses that have lab components.	34	15	25	2	
9	The laboratory trials improved conceptual knowledge and allowed for the connection of theory to practice (Experiential Learning).	17	42	12	5	
10	The entire syllabus was completed in the class by the teacher	24	33	11	8	
AVERAGE		28.3	26.2	14.2	7.3	0

Analysis on student feedback\_III B.tech-II semester For A.Y\_2020-2021



Dr. R. A. Desabell,  
 Head of the Department  
 Head of the Department  
 Department of E.C.E  
 CHIRALA ENGINEERING COLLEGE  
 CHIRALA-523157



*[Signature]*  
 Principal  
 PRINCIPAL  
 CHIRALA ENGINEERING COLLEGE  
 CHIRALA



where professionalism speaks

# CHIRALA ENGINEERING COLLEGE

RAMAPURAM BEACH ROAD, CHIRALA, ANDHRA PRADESH - 523157.

Approved by AICTE, Affiliated to JNTUK, Kakinada.

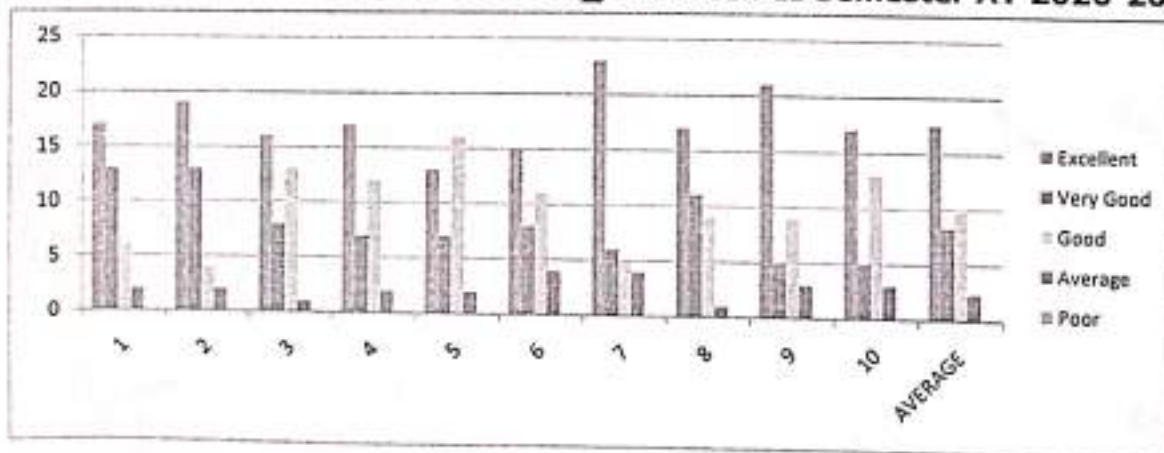
(ISO 9001:2008 Certified Institution)

## SUMMARY OF STUDENT'S FEEDBACK FORM ON CURRICULUM

Program Year	Year-Semester	Branch	Total No. Of Samples
2020 - 2021	II-II	ECE	38

S.NO.	ATTRIBUTES/PARAMETERS	Excellent	Very Good	Good	Average	Poor
1	Rate the syllabus you studied in relation to the competencies required from the courses.	17	13	6	2	
2	The credit allotment for the course is appropriate.	19	13	4	2	
3	The depth of the course content is appropriate in relation to the intended course outcomes (COs).	16	8	13	1	
4	The syllabus's modules are properly ordered.	17	7	12	2	
5	The curriculum helped me increase my abilities to develop, analyze, and solve problems.	13	7	16	2	
6	Rate the evaluation scheme created for each course.	15	8	11	4	
7	The course materials are readily available.	23	6	5	4	
8	Calculate the proportion (%) of courses that have lab components.	17	11	9	1	
9	The laboratory trials improved conceptual knowledge and allowed for the connection of theory to practice (Experiential Learning).	21	5	9	3	
10	The entire syllabus was completed in the class by the teacher	17	5	13	3	
AVERAGE		17.5	8.3	9.8	2.4	

## ANALYSIS on Student Feedback\_ II B.Tech-II Semester AY 2020-2021



Dr. R.A. Mandal  
 Head of the Department  
 Head of the Department  
 Department of E.C.E  
 CHIRALA ENGINEERING COLLEGE



*(Signature)*  
 Principal

PRINCIPAL  
 CHIRALA ENGINEERING COLLEGE





where professionalism speaks

# CHIRALA ENGINEERING COLLEGE

RAMAPURAM BEACH ROAD, CHIRALA, ANDHRA PRADESH – 523157.

Approved by AICTE, Affiliated to JNTUK, Kakinada.

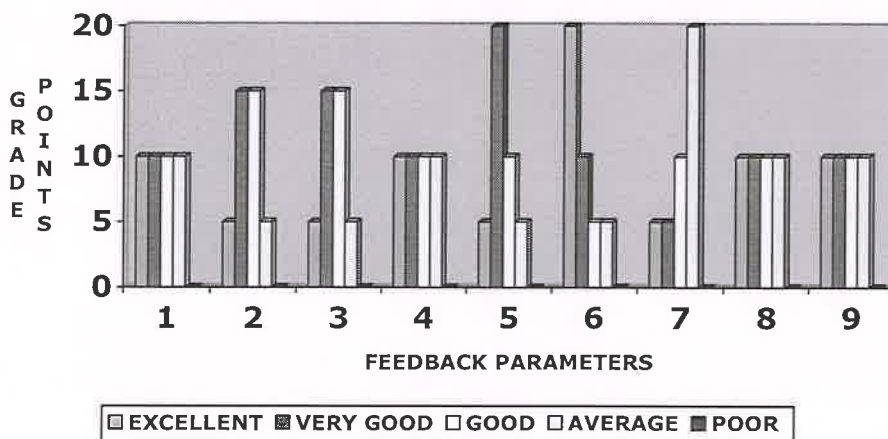
(ISO 9001:2008 Certified Institution)

## SUMMARY OF STUDENT'S FEEDBACK FORM ON CURRICULUM

Program Year	Year-Semester	Branch	Total No. Of Samples
2019-2020	I-1	CSE	40

S.NO.	ATTRIBUTES/PARAMETERS	Excellent	Very Good	Good	Average	Poor
1	Rate the syllabus you studied in relation to the competencies required from the courses.	10	10	10	10	
2	The course has been assigned the required amount of credit..	5	15	15	5	
3	The depth of the course content is appropriate in relation to the intended course outcomes (COs).	5	15	15	5	
4	My capacity for problem-solving, analysis, and development has improved thanks to the curriculum..	10	10	10	10	
5	Rate the evaluation scheme created for each course..	5	20	10	5	
6	The course materials are readily available.	20	10	5	5	
7	Determine the percentage (%) of courses that include labs.	5	5	10	20	
8	The laboratory experiments enhanced conceptual understanding and made it possible to relate theory to practice. (Experiential Learning).	10	10	10	10	
9	The entire syllabus was completed in the class by the teacher	10	10	10	10	
AVERAGE		8.8	11.6	10.5	8.5	

### AY 2019-2020 STUDENT FEEDBACK ANALYSIS CSE -II



R. Anshel  
Head of the Department  
Department of E.C.E  
CHIRALA ENGINEERING COLLEGE  
CHIRALA-523157



*[Signature]*  
Principal  
CHIRALA ENGINEERING COLLEGE  
CHIRALA.



where professionalism speaks

# CHIRALA ENGINEERING COLLEGE

RAMAPURAM BEACH ROAD, CHIRALA, ANDHRA PRADESH – 523157.

Approved by AICTE, Affiliated to JNTUK, Kakinada.

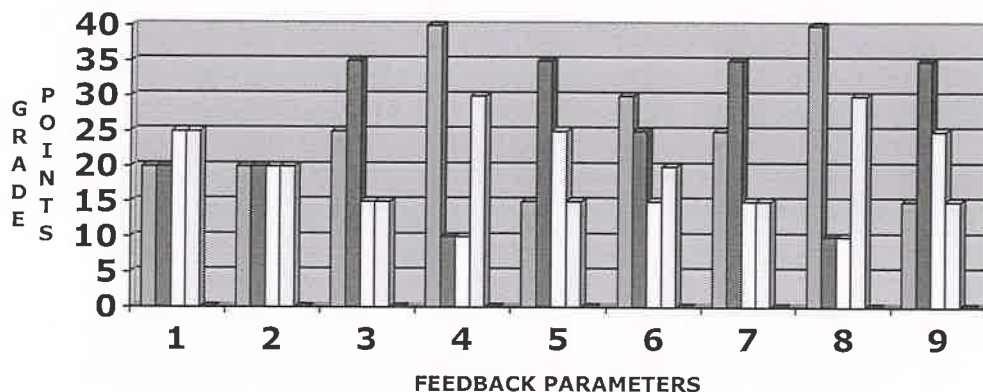
(ISO 9001:2008 Certified Institution)

## SUMMARY OF STUDENT'S FEEDBACK FORM ON CURRICULUM

Program Year	Year-Semester	Branch	Total No. Of Samples
2019-2020	III-1	EEE	90

S.NO.	ATTRIBUTES/PARAMETERS	Excellent	Very Good	Good	Average	Poor
1	Rate the syllabus you studied in relation to the competencies required from the courses.	20	20	25	25	
2	The course has been assigned the required amount of credit..	30	20	20	20	
3	The depth of the course content is appropriate in relation to the intended course outcomes (COs).	25	35	15	15	
4	My capacity for problem-solving, analysis, and development has improved thanks to the curriculum..	40	10	10	30	
5	Rate the evaluation scheme created for each course.	15	35	25	15	
6	The course materials are readily available.	30	25	15	20	
7	Determine the percentage(%) of courses that include labs.	25	35	15	15	
8	The laboratory experiments enhanced conceptual understanding and made it possible to relate theory to practice. (Experiential Learning).	40	10	10	30	
9	The entire syllabus was completed in the class by the teacher	15	35	25	15	
AVERAGE		26.66	25	17.7	20.5	

### AY 2019-2020 STUDENT FEEDBACK ANALYSIS EEE III-I



EXCELLENT VERY GOOD GOOD AVERAGE POOR

Head of the Department  
Department of E.C.E  
CHIRALA ENGINEERING COLLEGE  
CHIRALA-523157



Principal

PRINCIPAL  
CHIRALA ENGINEERING COLLEGE  
CHIRALA.





where professionalism speaks

# CHIRALA ENGINEERING COLLEGE

RAMAPURAM BEACH ROAD, CHIRALA, ANDHRA PRADESH – 523157.

Approved by AICTE, Affiliated to JNTUK, Kakinada.

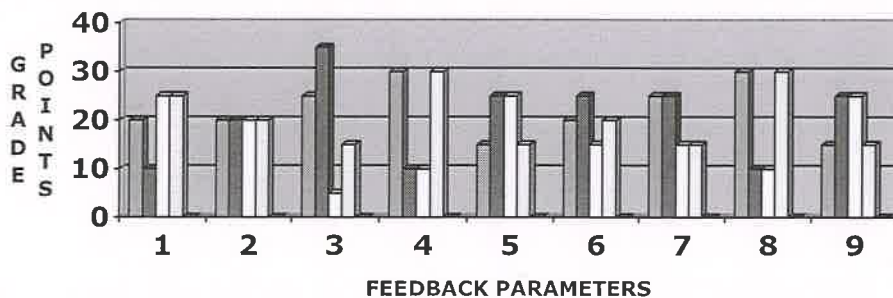
(ISO 9001:2008 Certified Institution)

## SUMMARY OF STUDENT'S FEEDBACK FORM ON CURRICULUM

Program Year	Year-Semester	Branch	Total No. Of Samples
2019-2020	IV-I	CSE	80

S.NO.	ATTRIBUTES/PARAMETERS	Excellent	Very Good	Good	Average	Poor
1	Rate the syllabus you studied in relation to the competencies required from the courses.	20	10	25	25	
2	The course has been assigned the required amount of credit..	20	20	20	20	
3	The depth of the course content is appropriate in relation to the intended course outcomes (COs).	25	35	5	15	
4	My capacity for problem-solving, analysis, and development has improved thanks to the curriculum..	30	10	10	30	
5	Rate the evaluation scheme created for each course.	15	25	25	15	
6	The course materials are readily available.	20	25	15	20	
7	Determine the percentage(%) of courses that include labs.	25	25	15	15	
8	The laboratory experiments enhanced conceptual understanding and made it possible to relate theory to practice. (Experiential Learning).	30	10	10	30	
9	The entire syllabus was completed in the class by the teacher	15	25	25	15	
AVERAGE		22.22	20.5	16.7	20.5	

### AY 2019-2020 STUDENT FEEDBACK ANALYSIS CSE IV-I



■ EXCELLENT ■ VERY GOOD □ GOOD □ AVERAGE ■ POOR

RA Kshel  
Head of the Department  
Department of E.C.E  
CHIRALA ENGINEERING COLLEGE  
CHIRALA-523157



*[Signature]*  
Principal  
CHIRALA ENGINEERING COLLEGE  
CHIRALA.



where professionalism speaks

# CHIRALA ENGINEERING COLLEGE

RAMAPURAM BEACH ROAD, CHIRALA, ANDHRA PRADESH – 523157.

Approved by AICTE, Affiliated to JNTUK, Kakinada.

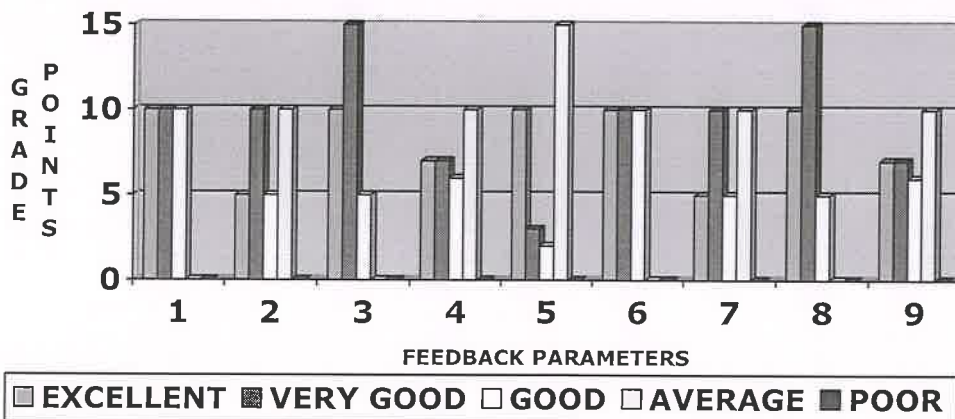
(ISO 9001:2008 Certified Institution)

## SUMMARY OF STUDENT'S FEEDBACK FORM ON CURRICULUM

Program Year	Year-Semester	Branch	Total No. Of Samples
2019-2020	I-II	ECE	30

S.NO.	ATTRIBUTES/PARAMETERS	Excellent	Very Good	Good	Average	Poor
1	Rate the syllabus you studied in relation to the competencies required from the courses.	10	10	10		
2	The course has been assigned the required amount of credit..	5	10	5	10	
3	The depth of the course content is appropriate in relation to the intended course outcomes (COs).	10	15	5		
4	My capacity for problem-solving, analysis, and development has improved thanks to the curriculum..	7	7	6	10	
5	Rate the evaluation scheme created for each course..	10	3	2	15	
6	The course materials are readily available.	10	10	10		
7	Determine the percentage(%) of courses that include labs.	5	10	5	10	
8	The laboratory experiments enhanced conceptual understanding and made it possible to relate theory to practice. (Experiential Learning).	10	15	5		
9	The entire syllabus was completed in the class by the teacher	7	7	6	10	
AVERAGE		8.22	9.6	6	6.1	

### AY 2019-2020 STUDENT FEEDBACK ANALYSIS ECE-I-II



R. A. Kishor  
Head of the Department  
Department of E.C.E  
CHIRALA ENGINEERING COLLEGE  
CHIRALA-523157



*(Signature)*  
Principal  
CHIRALA ENGINEERING COLLEGE  
CHIRALA.





where professionalism speaks

# CHIRALA ENGINEERING COLLEGE

RAMAPURAM BEACH ROAD, CHIRALA, ANDHRA PRADESH – 523157.

Approved by AICTE, Affiliated to JNTUK, Kakinada.

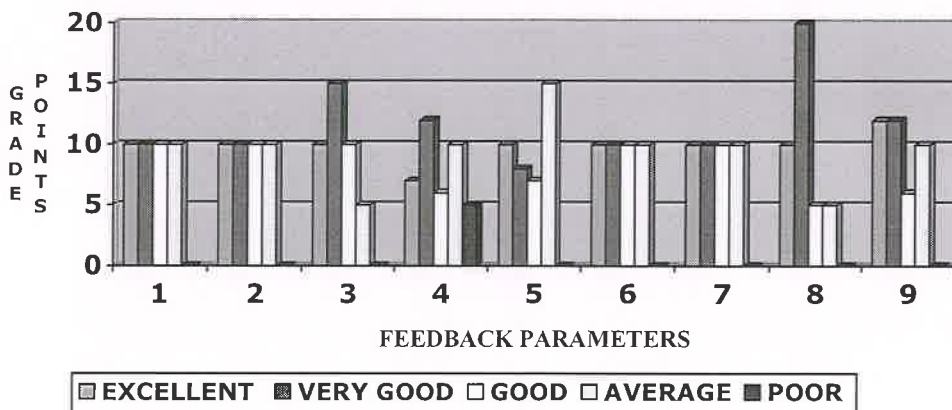
(ISO 9001:2008 Certified Institution)

## SUMMARY OF STUDENT'S FEEDBACK FORM ON CURRICULUM

Program Year	Year-Semester	Branch	Total No. Of Samples
2019-2020	II-II	ME	40

S.NO.	ATTRIBUTES/PARAMETERS	Excellent	Very Good	Good	Average	Poor
1	Rate the syllabus you studied in relation to the competencies required from the courses.	10	10	10	10	
2	The course has been assigned the required amount of credit..	10	10	10	10	
3	The depth of the course content is appropriate in relation to the intended course outcomes (COs).	10	15	10	5	
4	My capacity for problem-solving, analysis, and development has improved thanks to the curriculum..	7	12	6	10	5
5	Rate the evaluation scheme created for each course.	10	8	7	15	
6	The course materials are readily available.	10	10	10	10	
7	Determine the percentage(%) of courses that include labs.	10	10	10	10	
8	The laboratory experiments enhanced conceptual understanding and made it possible to relate theory to practice. (Experiential Learning).	10	20	5	5	
9	The entire syllabus was completed in the class by the teacher	12	12	6	10	
AVERAGE		9.88	11.88	8.2	9.4	0.55

### AY 2019-2020 STUDENT FEEDBACK ANALYSIS ME-II-I



*R.A. K. K. K.*  
Head of the Department  
Department of E.C.E  
CHIRALA ENGINEERING COLLEGE  
CHIRALA-523157



*[Signature]*  
Principal  
CHIRALA ENGINEERING COLLEGE  
CHIRALA.



where professionalism speaks

# CHIRALA ENGINEERING COLLEGE

RAMAPURAM BEACH ROAD, CHIRALA, ANDHRA PRADESH – 523157.

Approved by AICTE, Affiliated to JNTUK, Kakinada.

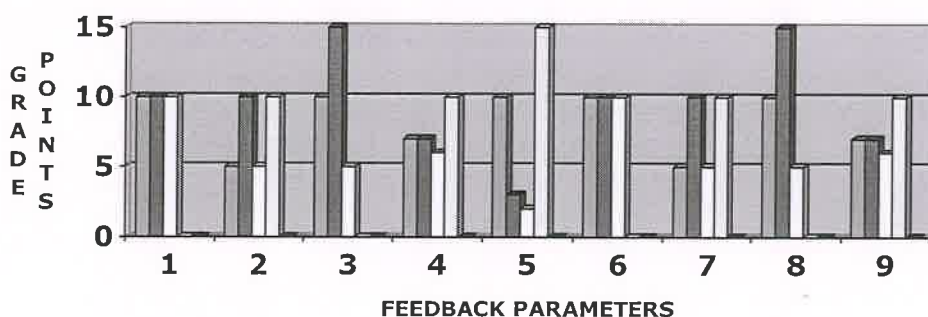
(ISO 9001:2008 Certified Institution)

## SUMMARY OF STUDENT'S FEEDBACK FORM ON CURRICULUM

Program Year	Year-Semester	Branch	Total No. Of Samples
2019-2020	III-II	EEE	30

S.NO.	ATTRIBUTES/PARAMETERS	Excellent	Very Good	Good	Average	Poor
1	Rate the syllabus you studied in relation to the competencies required from the courses.	10	10	10		
2	The course has been assigned the required amount of credit..	5	10	5	10	
3	The depth of the course content is appropriate in relation to the intended course outcomes (COs).	10	15	5		
4	My capacity for problem-solving, analysis, and development has improved thanks to the curriculum..	7	7	6	10	
5	Rate the evaluation scheme created for each course.	10	3	2	15	
6	The course materials are readily available.	10	10	10		
7	Determine the percentage(%) of courses that include labs.	5	10	5	10	
8	The laboratory experiments enhanced conceptual understanding and made it possible to relate theory to practice. (Experiential Learning).	10	15	5		
9	The entire syllabus was completed in the class by the teacher	7	7	6	10	
AVERAGE		8.22	9.6	6	6.1	

### AY 2019-2020 STUDENT FEEDBACK ANALYSIS EEE III-II



EXCELLENT  
  VERY GOOD  
  GOOD  
  AVERAGE  
  POOR

*R.A. K. K. K.*  
 Head of the Department  
 Department of E.C.E  
 CHIRALA ENGINEERING COLLEGE  
 CHIRALA-523157



*[Signature]*  
 Principal  
 CHIRALA ENGINEERING COLLEGE  
 CHIRALA.





where professionalism speaks

# CHIRALA ENGINEERING COLLEGE

RAMAPURAM BEACH ROAD, CHIRALA, ANDHRA PRADESH – 523157.

Approved by AICTE, Affiliated to JNTUK, Kakinada.

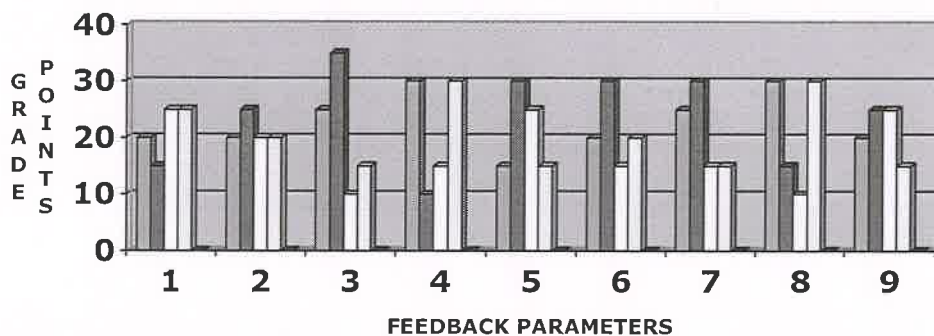
(ISO 9001:2008 Certified Institution)

## SUMMARY OF STUDENT'S FEEDBACK FORM ON CURRICULUM

Program Year	Year-Semester	Branch	Total No. Of Samples
2019-2020	IV-II	ECE	85

S.NO.	ATTRIBUTES/PARAMETERS	Excellent	Very Good	Good	Average	Poor
1	Rate the syllabus you studied in relation to the competencies required from the courses.	20	15	25	25	
2	The course has been assigned the required amount of credit..	20	25	20	20	
3	The depth of the course content is appropriate in relation to the intended course outcomes (COs).	25	35	10	15	
4	My capacity for problem-solving, analysis, and development has improved thanks to the curriculum..	30	10	15	30	
5	Rate the evaluation scheme created for each course.	15	30	25	15	
6	The course materials are readily available.	20	30	15	20	
7	Determine the percentage(%) of courses that include labs.	25	30	15	15	
8	The laboratory experiments enhanced conceptual understanding and made it possible to relate theory to practice. (Experiential Learning).	30	15	10	30	
9	The entire syllabus was completed in the class by the teacher	20	25	25	15	
AVERAGE		22.77	23.88	17.7	20.55	

### AY 2019-2020 STUDENT FEEDBACK ANALYSIS ECE IV-II



EXCELLENT VERY GOOD GOOD AVERAGE POOR

*R. Akshel*  
Head of the Department  
Department of E.C.E  
CHIRALA ENGINEERING COLLEGE  
CHIRALA-523157



*[Signature]*  
Principal  
CHIRALA ENGINEERING COLLEGE  
CHIRALA.



where professionalism speaks

# CHIRALA ENGINEERING COLLEGE

RAMAPURAM BEACH ROAD, CHIRALA, Andhra Pradesh – 523157.

Approved by AICTE, Affiliated to JNTUK, Kakinada.

(ISO 9001:2008 Certified Institution)

## SUMMARY of TEACHER FEEDBACK ON CURRICULUM (A.Y-2019-2020)

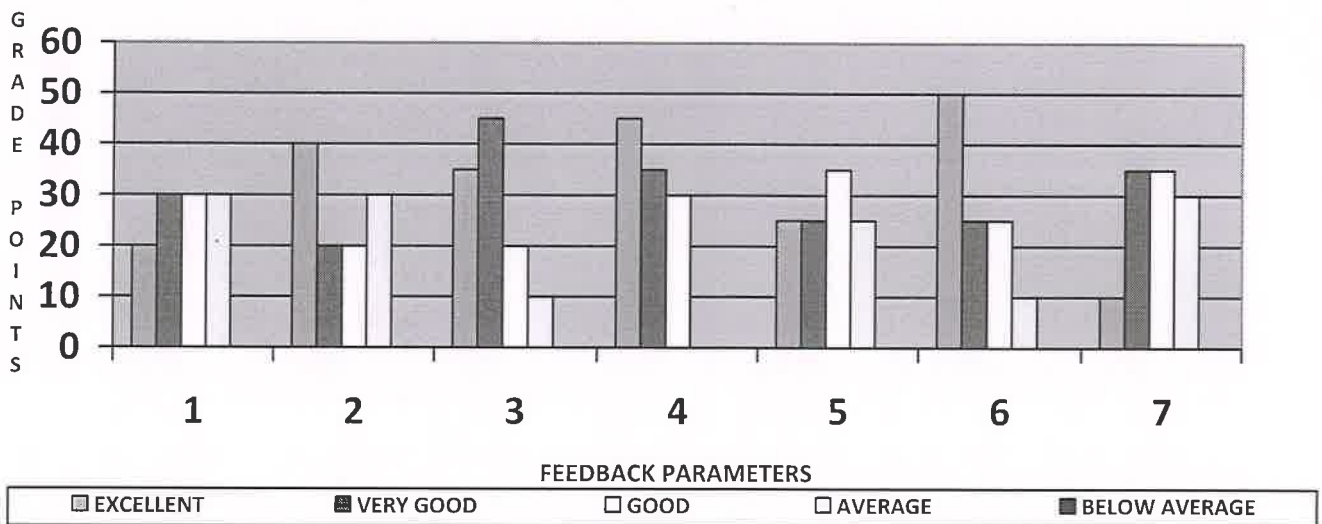
The questionnaire is intended to collect information relating to your satisfaction towards the curriculum, learning and evaluation. The information provided by you will be kept confidential and will be used as feedback for quality improvement of the program of studies/institution.

Directions: a score for each item please indicate your level of satisfaction with the following statement by choosing between 1 and 5.

\*Rating score: Excellent (5), Very Good(4), Good(3), Average (2), Below Average(1)

S No	Curriculum, Teaching, Learning and Evaluation	5	4	3	2	1
1.	Needs-based curriculum and syllabus	20	30	30	30	0
2.	The course outcomes are well defined and clear.	40	20	20	30	0
3.	The library has an adequate amount of pertinent reading materials and digital resources available.	35	45	20	10	0
4.	The course has good balance between theory and application.	45	35	30	0	0
5.	The syllabus of this course increased my knowledge and perspective in the subject area.	25	25	35	25	0
6.	I am able to achieve the minimum required course outcome attainment level for my class	50	25	25	10	0
7.	I have taken sufficient steps to provide assistance to slow learners	10	35	35	30	0
	AVERAGE	32.14	30.71	27.85	19.2	0

### AY 2019-2020 ANALYSIS OF TEACHERS FEEDBACK ON CURRICULUM



*[Signature]*  
Principal  
CHIRALA ENGINEERING COLLEGE  
CHIRALA.





where professionalism speaks

# CHIRALA ENGINEERING COLLEGE

RAMAPURAM BEACH ROAD, CHIRALA, ANDHRA PRADESH - 523157.

Approved by AICTE, Affiliated to JNTUK, Kakinada.

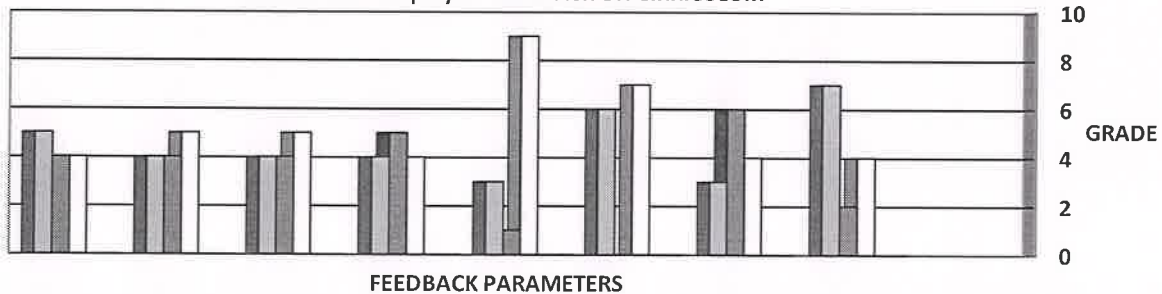
(ISO 9001:2008 Certified Institution)

## SUMMARY OF EMPLOYER/INDUSTRY FEEDBACK

Employer feedback is collected and analyzed taken on curriculum designed by JNTUK. We have received total 13 employer feedback from department of electronics and communication engineering for the Academic year 2019-2020.

S.NO.	ATTRIBUTES	5	4	3	2	1
1.	How would you rank the pupils' technical knowledge?	5	4	4		
2.	In terms of employability, how relevant do you think the programme is?	4	4	5		
3.	How well do you think the pupils can collaborate in groups?	4	4	5		
4.	How do you rate the students managerial and leadership qualities?	4	5	4		
5.	How well do you think the pupils can adapt to industrial processes and gain new skills?	3	1	9		
6.	How much do you think students have contributed to the expansion of industries?	6		7		
7.	How do you rate the communication skills of the students?	3	6	4		
8.	How do you rate the offering of electives in relation to the technological advancements?	7	2	4		
Average		4.5	3.25	5.25		

AY 2019-2020 Employer FEEDBACK ON CIRRICULUM



EXCELLENT   
  VERY GOOD   
  GOOD   
  AVERAGE   
  POOR



*(Signature)*

Principal  
CHIRALA ENGINEERING COLLEGE  
CHIRALA.



where professionalism speaks

# CHIRALA ENGINEERING COLLEGE

RAMAPURAM BEACH ROAD, CHIRALA, Andhra Pradesh – 523157.

Approved by AICTE, Affiliated to JNTUK, Kakinada.

(ISO 9001:2008 Certified Institution)

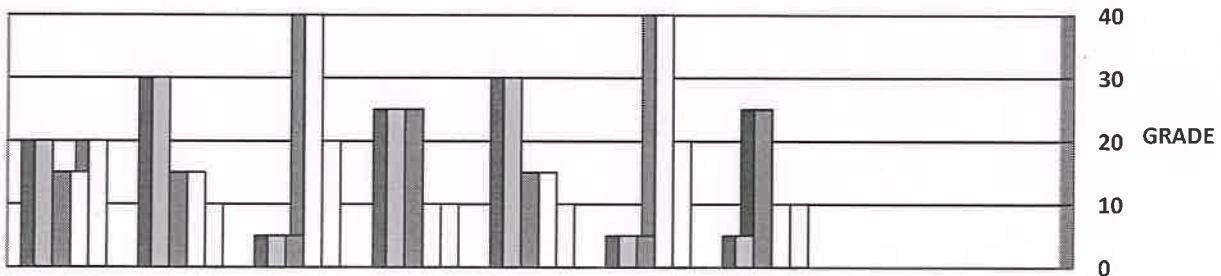
## SUMMARY of ALUMNI FEEDBACK ON CURRICULUM (A.Y-2019-2020)

This feedback on Curriculum, Teaching, Learning and Evaluation is intended to collect information to obtain alumni input on the quality of education they received and the level of preparation they had at University. The purpose of this survey is to assess the quality of the academic program. We seek your help in completing this survey

\*Rating score: Excellent (5), Very Good(4), Good(3), Average (2), Below Average(1)

S No	Questionnaire	5	4	3	2	1
1.	How suitable do you think the material in the curriculum and syllabus is for your placement or further education?	20	15	15	20	
2.	What is your opinion of the extracurricular activities planned for when you are studying?	30	15	15	10	
3.	What is your opinion of the Library's accessibility to pertinent print and digital resources?	5	5	40	20	
4.	What is your opinion on the value of industry-academy partnerships?	25	25	10	10	
5.	How do you rate experiential learning (hands-on) of the courses?	30	15	15	10	
6.	How transparent do you think the institute's academic procedures are?	5	5	40	20	
7.	What is your opinion of the academic programmes that are implemented for the benefit of students?	25	25	10	10	
	AVERAGE	20	15	20.7	14.2	

AY 2019-2020 Alumni FEEDBACK ON CURRICULUM



FEEDBACK PARAMETERS



*(Handwritten signature)*

Principal  
CHIRALA ENGINEERING COLLEGE  
CHIRALA.





where professionalism speaks

# CHIRALA ENGINEERING COLLEGE

RAMAPURAM BEACH ROAD, CHIRALA, ANDHRA PRADESH – 523157.

Approved by AICTE, Affiliated to JNTUK, Kakinada.

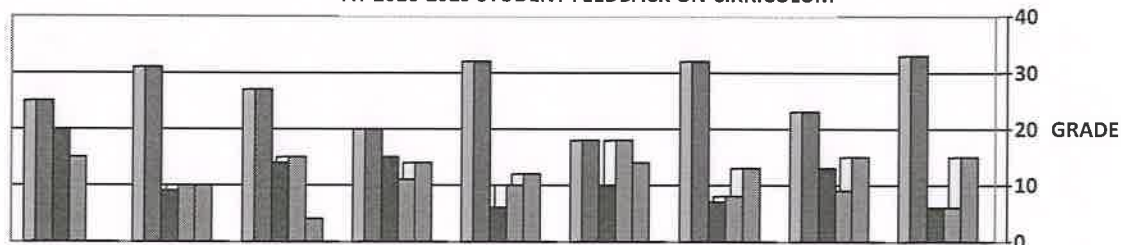
(ISO 9001:2008 Certified Institution)

## SUMMARY OF STUDENT'S FEEDBACK FORM ON CURRICULUM

Program Year	Year-Semester	Branch	Total No. Of Samples
2018-2019	I-1	ECE	60

S.NO.	ATTRIBUTES/PARAMETERS	Excellent	Very Good	Good	Average	Poor
1	Rate the syllabus you studied in relation to the competencies required from the courses.	25	20	15		
2	The course has been assigned the required amount of credit..	31	9	10	10	
3	The depth of the course content is appropriate in relation to the intended course outcomes (COs).	27	14	15	4	
4	My capacity for problem-solving, analysis, and development has improved thanks to the curriculum..	20	15	11	14	
5	Rate the evaluation scheme created for each course.	32	6	10	12	
6	The course materials are readily available.	18	10	18	14	
7	Determine the percentage(%) of courses that include labs.	32	7	8	13	
8	The laboratory experiments enhanced conceptual understanding and made it possible to relate theory to practice. (Experiential Learning).	23	13	9	15	
9	The entire syllabus was completed in the class by the teacher	33	6	6	15	
AVERAGE		26.77	11.11	11.33	10.77	

AY 2018-2019 STUDENT FEEDBACK ON CURRICULUM



EXCELLENT  
 VERY GOOD  
 GOOD  
 AVERAGE  
 POOR

*N. e.*

Head of the Department

Head of the Department  
Department of E.C.E  
CHIRALA ENGINEERING COLLEGE  
CHIRALA-523157



*C. e.*

Principal

PRINCIPAL  
CHIRALA ENGINEERING COLLEGE  
CHIRALA.



where professionalism speaks

# CHIRALA ENGINEERING COLLEGE

RAMAPURAM BEACH ROAD, CHIRALA, ANDHRA PRADESH - 523157.

Approved by AICTE, Affiliated to JNTUK, Kakinada.

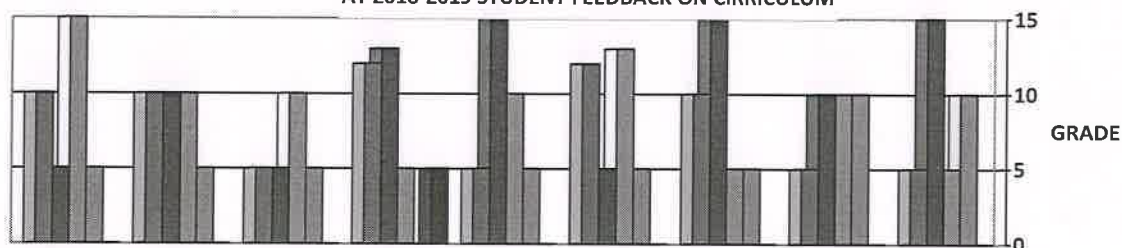
(ISO 9001:2008 Certified Institution)

## SUMMARY OF STUDENT'S FEEDBACK FORM ON CURRICULUM


Program Year	Year-Semester	Branch	Total No. Of Samples
2018-2019	II-1	EEE	35

S.NO.	ATTRIBUTES/PARAMETERS	Excellent	Very Good	Good	Average	Poor
1	Rate the syllabus you studied in relation to the competencies required from the courses.	10	5	15	5	
2	The course has been assigned the required amount of credit..	10	10	10	5	
3	The depth of the course content is appropriate in relation to the intended course outcomes (COs).	5	15	10	5	
4	My capacity for problem-solving, analysis, and development has improved thanks to the curriculum..	12	13	5		5
5	Rate the evaluation scheme created for each course.	5	15	10	5	
6	The course materials are readily available.	12	5	13	5	
7	Determine the percentage(%) of courses that include labs.	10	15	5	5	
8	The laboratory experiments enhanced conceptual understanding and made it possible to relate theory to practice. (Experiential Learning).	5	10	10	10	
9	The entire syllabus was completed in the class by the teacher	5	15	5	10	
AVERAGE		8.22	11.44	9	5.5	0.5

AY 2018-2019 STUDENT FEEDBACK ON CURRICULUM



EXCELLENT  
 VERY GOOD  
 GOOD  
 AVERAGE  
 POOR

  
 Head of the Department  
 Department of E.C.E  
 CHIRALA ENGINEERING COLLEGE  
 CHIRALA-523157



  
 Principal  
 PRINCIPAL  
 CHIRALA ENGINEERING COLLEGE  
 CHIRALA.





where professionalism speaks

# CHIRALA ENGINEERING COLLEGE

RAMAPURAM BEACH ROAD, CHIRALA, ANDHRA PRADESH – 523157.

Approved by AICTE, Affiliated to JNTUK, Kakinada.

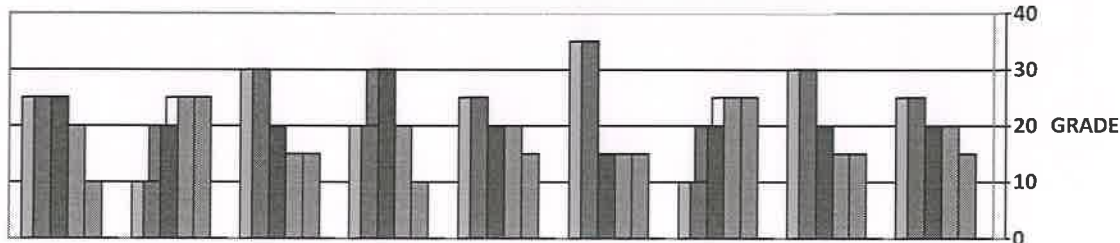
(ISO 9001:2008 Certified Institution)

## SUMMARY OF STUDENT'S FEEDBACK FORM ON CURRICULUM


Program Year	Year-Semester	Branch	Total No. Of Samples
2018-2019	III-I	CSE	80

S.NO.	ATTRIBUTES/PARAMETERS	Excellent	Very Good	Good	Average	Poor
1	Rate the syllabus you studied in relation to the competencies required from the courses.	25	25	20	10	
2	The course has been assigned the required amount of credit..	10	20	25	25	
3	The depth of the course content is appropriate in relation to the intended course outcomes (COs).	30	20	15	15	
4	My capacity for problem-solving, analysis, and development has improved thanks to the curriculum..	20	30	20	10	
5	Rate the evaluation scheme created for each course.	25	20	20	15	
6	The course materials are readily available.	35	15	15	15	
7	Determine the percentage(%) of courses that include labs.	10	20	25	25	
8	The laboratory experiments enhanced conceptual understanding and made it possible to relate theory to practice. (Experiential Learning).	30	20	15	15	
9	The entire syllabus was completed in the class by the teacher	25	20	20	15	
AVERAGE		23.3	21.1	19.4	16.1	


AY 2018-2019 STUDENT FEEDBACK ON CIRRICULUM



EXCELLENT VERY GOOD GOOD AVERAGE POOR

  
 Head of the Department  
 Department of E.C.E  
 CHIRALA ENGINEERING COLLEGE  
 CHIRALA-523157



  
 Principal  
 PRINCIPAL  
 CHIRALA ENGINEERING COLLEGE  
 CHIRALA.



where professionalism speaks

# CHIRALA ENGINEERING COLLEGE

RAMAPURAM BEACH ROAD, CHIRALA, ANDHRA PRADESH – 523157.

Approved by AICTE, Affiliated to JNTUK, Kakinada.

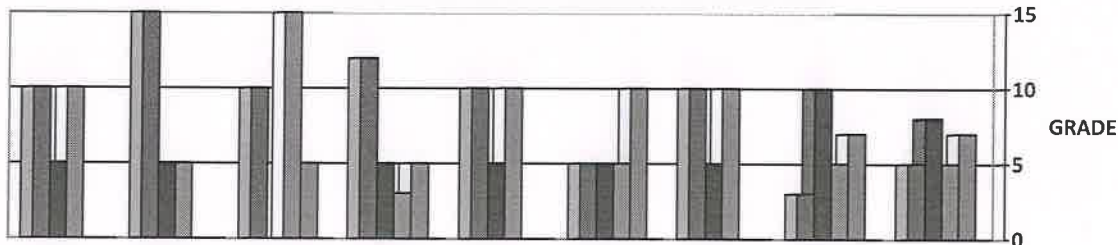
(ISO 9001:2008 Certified Institution)

## SUMMARY OF STUDENT'S FEEDBACK FORM ON CURRICULUM

Program Year	Year-Semester	Branch	Total No. Of Samples
2018-2019	IV-1	EEE	25

S.NO.	ATTRIBUTES/PARAMETERS	Excellent	Very Good	Good	Average	Poor
1	Rate the syllabus you studied in relation to the competencies required from the courses.	10	5	10		
2	The course has been assigned the required amount of credit..	15	5	5		
3	The depth of the course content is appropriate in relation to the intended course outcomes (COs).	10		15	5	
4	My capacity for problem-solving, analysis, and development has improved thanks to the curriculum..	12	5	3	5	
5	Rate the evaluation scheme created for each course.	10	5	10		
6	The course materials are readily available.	5	5	5	10	
7	Determine the percentage(%) of courses that include labs.	10	5	10		
8	The laboratory experiments enhanced conceptual understanding and made it possible to relate theory to practice. (Experiential Learning).	3	10	5	7	
9	The entire syllabus was completed in the class by the teacher	5	8	5	7	
AVERAGE		8.8	5.3	7.5	3.7	

AY 2018-2019 STUDENT FEEDBACK ON CIRRICULUM



EXCELLENT VERY GOOD GOOD AVERAGE POOR

Head of the Department  
Department of E.C.E  
CHIRALA ENGINEERING COLLEGE  
CHIRALA-523 157



Principal  
CHIRALA ENGINEERING COLLEGE  
CHIRALA.





where professionalism speaks

# CHIRALA ENGINEERING COLLEGE

RAMAPURAM BEACH ROAD, CHIRALA, ANDHRA PRADESH – 523157.

Approved by AICTE, Affiliated to JNTUK, Kakinada.

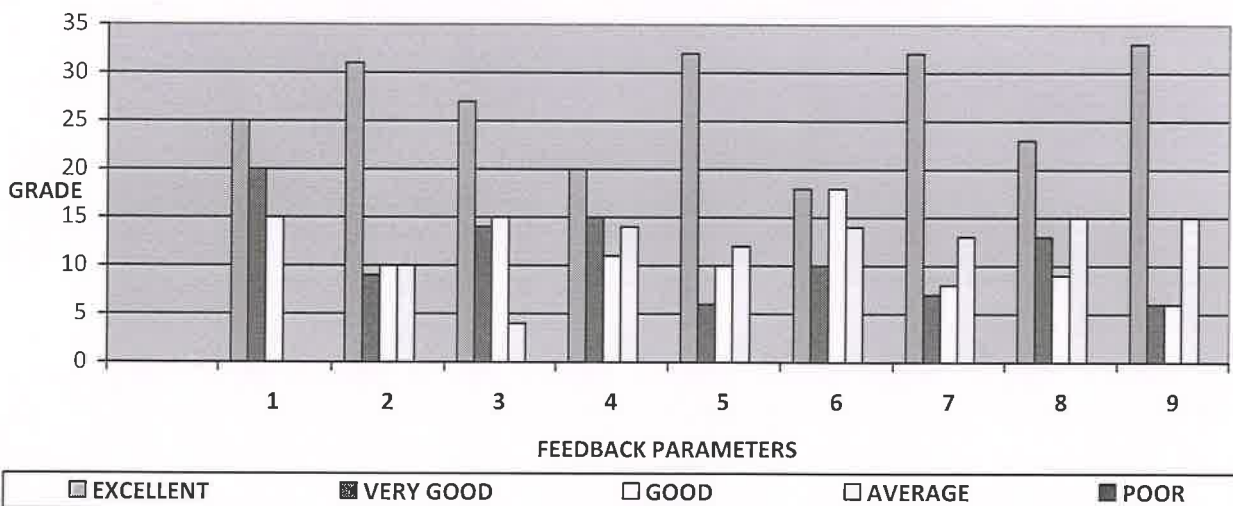
(ISO 9001:2008 Certified Institution)

## SUMMARY OF STUDENT'S FEEDBACK FORM ON CURRICULUM

Program Year	Year-Semester	Branch	Total No. Of Samples
2018-2019	I-II	CSE	60

S.NO.	ATTRIBUTES/PARAMETERS	Excellent	Very Good	Good	Average	Poor
1	Rate the syllabus you studied in relation to the competencies required from the courses.	25	20	15		
2	The course has been assigned the required amount of credit..	31	9	10	10	
3	The depth of the course content is appropriate in relation to the intended course outcomes (COs).	27	14	15	4	
4	My capacity for problem-solving, analysis, and development has improved thanks to the curriculum..	20	15	11	14	
5	Rate the evaluation scheme created for each course.	32	6	10	12	
6	The course materials are readily available.	18	10	18	14	
7	Determine the percentage(%) of courses that include labs.	32	7	8	13	
8	The laboratory experiments enhanced conceptual understanding and made it possible to relate theory to practice. (Experiential Learning).	23	13	9	15	
9	The entire syllabus was completed in the class by the teacher	33	6	6	15	
AVERAGE		26.77	11.11	11.33	10.77	

AY 2018-2019 STUDENT FEEDBACK ON CURRICULLUM



Head of the Department  
Department of E.C.E.  
CHIRALA ENGINEERING COLLEGE  
CHIRALA-523157



Principal  
PRINCIPAL  
CHIRALA ENGINEERING COLLEGE  
CHIRALA.



where professionalism speaks

# CHIRALA ENGINEERING COLLEGE

RAMAPURAM BEACH ROAD, CHIRALA, ANDHRA PRADESH – 523157.

Approved by AICTE, Affiliated to JNTUK, Kakinada.

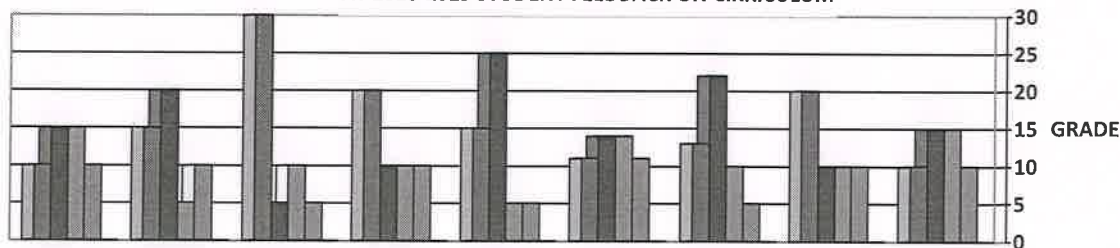
(ISO 9001:2008 Certified Institution)

## SUMMARY OF STUDENT'S FEEDBACK FORM ON CURRICULUM

Program Year	Year-Semester	Branch	Total No. Of Samples
2018-2019	II-II	CE	50

S.NO.	ATTRIBUTES/PARAMETERS	Excellent	Very Good	Good	Average	Poor
1	Rate the syllabus you studied in relation to the competencies required from the courses.	10	15	15	10	
2	The course has been assigned the required amount of credit..	15	20	5	10	
3	The depth of the course content is appropriate in relation to the intended course outcomes (COs).	30	5	10	5	
4	My capacity for problem-solving, analysis, and development has improved thanks to the curriculum..	20	10	10	10	
5	Rate the evaluation scheme created for each course.	15	25	5	5	
6	The course materials are readily available.	11	14	14	11	
7	Determine the percentage(%) of courses that include labs.	13	22	10	5	
8	The laboratory experiments enhanced conceptual understanding and made it possible to relate theory to practice. (Experiential Learning).	20	10	10	10	
9	The entire syllabus was completed in the class by the teacher	10	15	15	10	
AVERAGE		16	15.11	10.4	8.4	

AY 2018-2019 STUDENT FEEDBACK ON CURRICULUM



■ EXCELLENT ■ VERY GOOD □ GOOD □ AVERAGE ■ POOR

*N. A.*  
Head of the Department  
Head of the Department  
Department of E.C.E  
CHIRALA ENGINEERING COLLEGE  
CHIRALA-523157



*[Signature]*  
Principal  
CHIRALA ENGINEERING COLLEGE  
CHIRALA.





where professionalism speaks

# CHIRALA ENGINEERING COLLEGE

RAMAPURAM BEACH ROAD, CHIRALA, ANDHRA PRADESH – 523157.

Approved by AICTE, Affiliated to JNTUK, Kakinada.

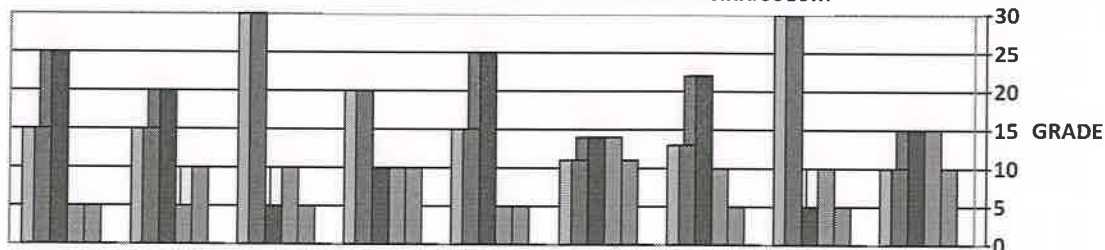
(ISO 9001:2008 Certified Institution)

## SUMMARY OF STUDENT'S FEEDBACK FORM ON CURRICULUM

Program Year	Year-Semester	Branch	Total No. Of Samples
2018-2019	III-II	ME	50

S.NO.	ATTRIBUTES/PARAMETERS	Excellent	Very Good	Good	Average	Poor
1	Rate the syllabus you studied in relation to the competencies required from the courses.	15	25	5	5	
2	The course has been assigned the required amount of credit..	15	20	5	10	
3	The depth of the course content is appropriate in relation to the intended course outcomes (COs).	30	5	10	5	
4	My capacity for problem-solving, analysis, and development has improved thanks to the curriculum..	20	10	10	10	
5	Rate the evaluation scheme created for each course.	15	25	5	5	
6	The course materials are readily available.	11	14	14	11	
7	Determine the percentage(%) of courses that include labs.	13	22	10	5	
8	The laboratory experiments enhanced conceptual understanding and made it possible to relate theory to practice. (Experiential Learning).	30	5	10	5	
9	The entire syllabus was completed in the class by the teacher	10	15	15	10	
AVERAGE		17.66	15.66	9.33	7.33	

AY 2018-2019 STUDENT FEEDBACK ON CURRICULUM



EXCELLENT VERY GOOD GOOD AVERAGE POOR

Head of the Department  
Department of E.C.E  
CHIRALA ENGINEERING COLLEGE  
CHIRALA-523157



Principal  
PRINCIPAL  
CHIRALA ENGINEERING COLLEGE  
CHIRALA.



where professionalism speaks

# CHIRALA ENGINEERING COLLEGE

RAMAPURAM BEACH ROAD, CHIRALA, ANDHRA PRADESH – 523157.

Approved by AICTE, Affiliated to JNTUK, Kakinada.

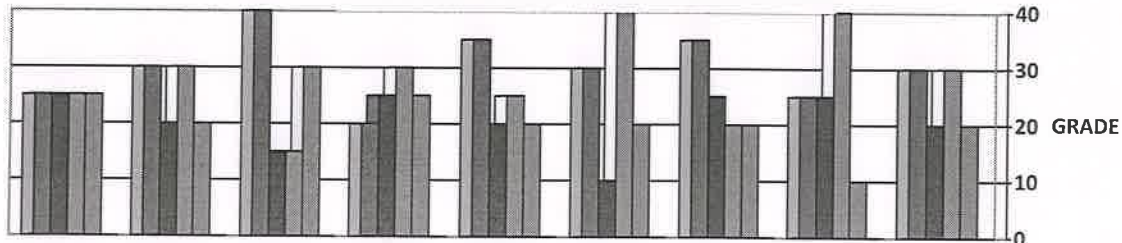
(ISO 9001:2008 Certified Institution)

## SUMMARY OF STUDENT'S FEEDBACK FORM ON CURRICULUM

Program Year	Year-Semester	Branch	Total No. Of Samples
2018-2019	IV-II	ECE	100

S.NO.	ATTRIBUTES/PARAMETERS	Excellent	Very Good	Good	Average	Poor
1	Rate the syllabus you studied in relation to the competencies required from the courses.	25	25	25	25	
2	The course has been assigned the required amount of credit..	30	20	30	20	
3	The depth of the course content is appropriate in relation to the intended course outcomes (COs).	40	15	15	30	
4	My capacity for problem-solving, analysis, and development has improved thanks to the curriculum..	20	25	30	25	
5	Rate the evaluation scheme created for each course.	35	20	25	20	
6	The course materials are readily available.	30	10	40	20	
7	Determine the percentage(%) of courses that include labs.	35	25	20	20	
8	The laboratory experiments enhanced conceptual understanding and made it possible to relate theory to practice. (Experiential Learning).	25	25	40	10	
9	The entire syllabus was completed in the class by the teacher	30	20	30	20	
AVERAGE		30	20.55	28.33	21.11	

AY 2018-2019 STUDENT FEEDBACK ON CURRICULUM



EXCELLENT  
 VERY GOOD  
 GOOD  
 AVERAGE  
 POOR

Head of the Department  
 Department of E.C.E  
 CHIRALA ENGINEERING COLLEGE  
 CHIRALA-523157



Principal  
 PRINCIPAL  
 CHIRALA ENGINEERING COLLEGE  
 CHIRALA.





where professionalism speaks

# CHIRALA ENGINEERING COLLEGE

RAMAPURAM BEACH ROAD, CHIRALA, Andhra Pradesh – 523157.

Approved by AICTE, Affiliated to JNTUK, Kakinada.

(ISO 9001:2008 Certified Institution)

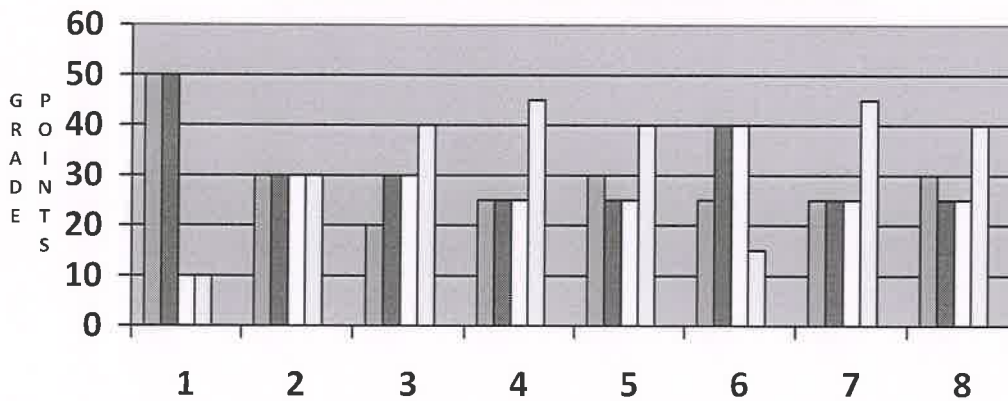
## SUMMARY of TEACHER FEEDBACK ON CURRICULUM (A.Y-2018-2019)

The questionnaire is intended to collect information relating to your satisfaction towards the curriculum, learning and evaluation. The information provided by you will be kept confidential and will be used as feedback for quality improvement of the program of studies/institution.

Directions: a score for each item please indicate your level of satisfaction with the following statement by choosing between 1 and 5.  
\*Rating score: Excellent (5), Very Good(4), Good(3), Average (2), Below Average(1)

S No	Curriculum, Teaching, Learning and Evaluation	5	4	3	2	1
1.	Needs-based curriculum and syllabus	50	50	10	10	
2.	The course outcomes are well defined and clear.	30	30	30	30	
3.	The library has an adequate amount of pertinent reading materials and digital resources available.	20	30	30	40	
4.	The course has good balance between theory and application.	25	25	25	45	
5.	The syllabus of this course increased my knowledge and perspective in the subject area.	30	25	25	40	
6.	I am able to achieve the minimum required course outcome attainment level for my class	25	40	40	15	
7.	I have taken sufficient steps to provide assistance to slow learners	25	25	25	45	
8.	I have the freedom to propose, modify, suggest and incorporate new topics in the syllabus through proper forum.	30	25	25	40	
	AVERAGE	29.37	31.25	26.25	33.12	

### AY 2018-2019 TEACHER FEEDBACK ANALYSIS



#### FEED BACK PARAMETERS

EXCELLENT    
  VERY GOOD    
  GOOD    
  AVERAGE    
  POOR



*[Signature]*  
Principal

PRINCIPAL  
CHIRALA ENGINEERING COLLEGE  
CHIRALA.



where professionalism speaks

# CHIRALA ENGINEERING COLLEGE

RAMAPURAM BEACH ROAD, CHIRALA, ANDHRA PRADESH – 523157.

Approved by AICTE, Affiliated to JNTUK, Kakinada.

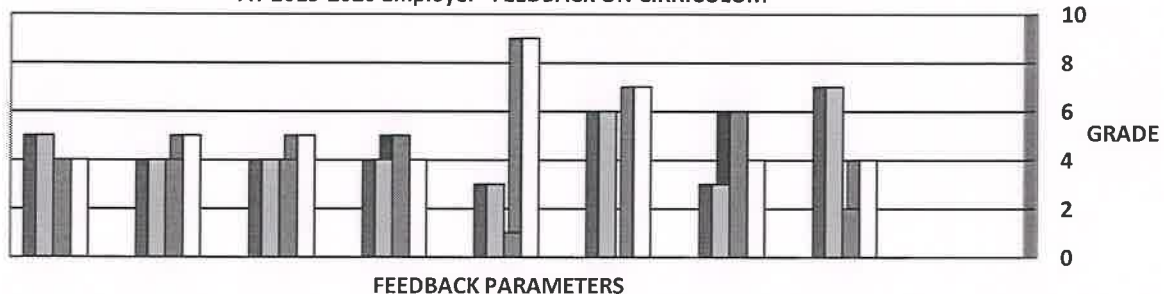
(ISO 9001:2008 Certified Institution)

## SUMMARY OF EMPLOYER/INDUSTRY FEEDBACK

Employer feedback is collected and analyzed taken on curriculum designed by JNTUK. We have received total 13 employer feedback from department of electronics and communication engineering for the Academic year 2019-2020.

S.NO.	ATTRIBUTES	5	4	3	2	1
1.	How would you rank the pupils' technical knowledge?	5	4	4		
2.	In terms of employability, how relevant do you think the programme is?	4	4	5		
3.	How well do you think the pupils can collaborate in groups?	4	4	5		
4.	How do you rate the students managerial and leadership qualities?	4	5	4		
5.	How well do you think the pupils can adapt to industrial processes and gain new skills?	3	1	9		
6.	How much do you think students have contributed to the expansion of industries?	6		7		
7.	How do you rate the communication skills of the students?	3	6	4		
8.	How do you rate the offering of electives in relation to the technological advancements?	7	2	4		
Average		4.5	3.25	5.25		

AY 2019-2020 Employer FEEDBACK ON CIRRICULUM



EXCELLENT   
  VERY GOOD   
  GOOD   
  AVERAGE   
  POOR



*Good*  
Principal

PRINCIPAL  
CHIRALA ENGINEERING COLLEGE  
CHIRALA.





where professionalism speaks

# CHIRALA ENGINEERING COLLEGE

RAMAPURAM BEACH ROAD, CHIRALA, Andhra Pradesh – 523157.

Approved by AICTE, Affiliated to JNTUK, Kakinada.

(ISO 9001:2008 Certified Institution)

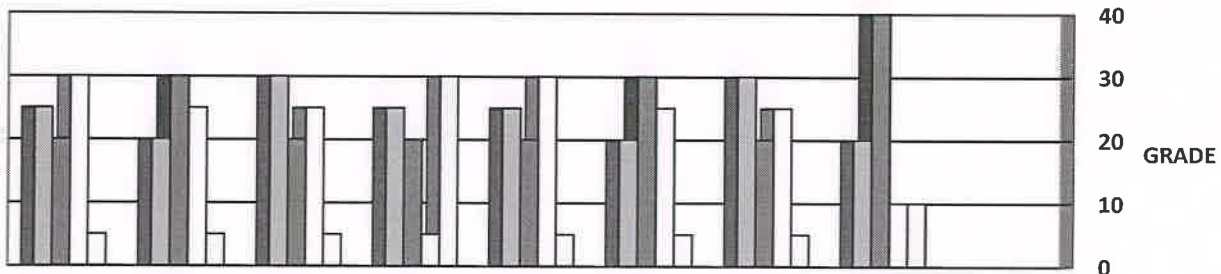
## SUMMARY of ALUMNI FEEDBACK ON CURRICULUM (A.Y-2018-2019)

This feedback on Curriculum, Teaching, Learning and Evaluation is intended to collect information to obtain alumni input on the quality of education they received and the level of preparation they had at University. The purpose of this survey is to assess the quality of the academic program. We seek your help in completing this survey

\*Rating score: Excellent (5), Very Good(4), Good(3), Average (2), Below Average(1)

S No	Questionnaire	5	4	3	2	1
1.	How suitable do you think the material in the curriculum and syllabus is for your placement or further education?	25	20	30	5	
2.	What is your opinion of the extracurricular activities planned for when you are studying?	20	30	25	5	
3.	What is your opinion of the Library's accessibility to pertinent print and digital resources?	30	20	25	5	
4.	What is your opinion on the value of industry-academy partnerships?	25	20	5	30	
5.	How do you rate experiential learning (hands-on) of the courses?	25	20	30	5	
6.	How transparent do you think the institute's academic procedures are?	20	30	25	5	
7.	What is your opinion of the academic programmes that are implemented for the benefit of students?	30	20	25	5	
8.	How would you rank the development of your interpersonal and intrapersonal skills during the course of your studies?	20	40	10	10	
	AVERAGE	24.37	25	21.87	8.75	

AY 2018-2019 Alumni FEEDBACK ON CURRICULUM



FEEDBACK PARAMETERS



Principal

PRINCIPAL  
CHIRALA ENGINEERING COLLEGE  
CHIRALA.